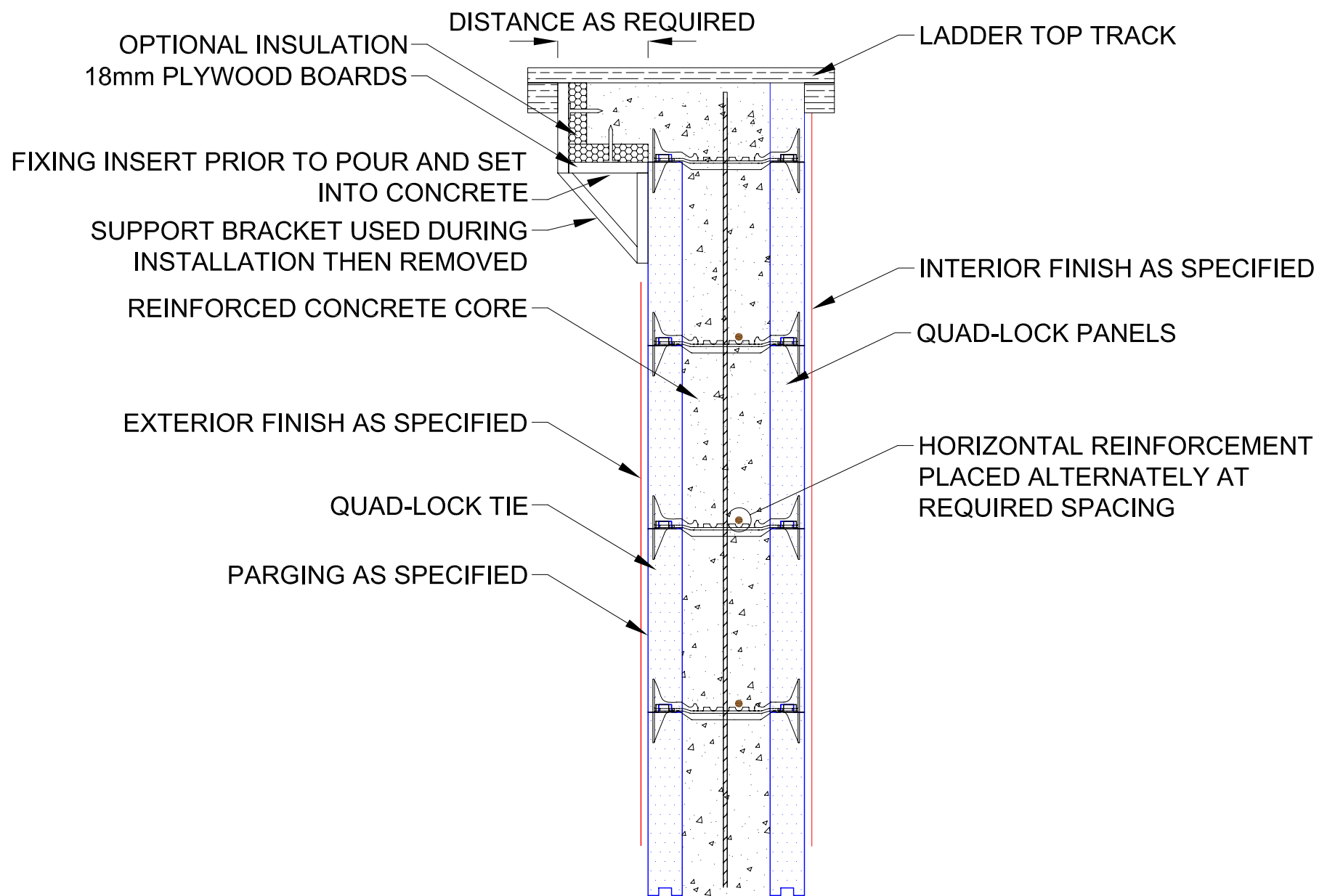


## U - 0.28 WALL CONFIGURATION

| NOMINAL CONC. WIDTH - TIE SIZE | WALL WIDTH <b>W</b>                      | WALL CAVITY <b>C</b>                     |
|--------------------------------|--|--|
| 4" (100mm)                     | 8 <sup>1</sup> / <sub>4</sub> " (210mm)  | 3 <sup>3</sup> / <sub>4</sub> " (96mm)   |
| 6" (150mm)                     | 10 <sup>1</sup> / <sub>4</sub> " (260mm) | 5 <sup>3</sup> / <sub>4</sub> " (146mm)  |
| 8" (200mm)                     | 12 <sup>1</sup> / <sub>4</sub> " (311mm) | 7 <sup>3</sup> / <sub>4</sub> " (197mm)  |
| 10" (250mm)                    | 14 <sup>1</sup> / <sub>4</sub> " (362mm) | 9 <sup>3</sup> / <sub>4</sub> " (248mm)  |
| 12" (300mm)                    | 16 <sup>1</sup> / <sub>4</sub> " (413mm) | 11 <sup>3</sup> / <sub>4</sub> " (299mm) |



10.  
01.02

## SHUTTERED CORBEL DETAIL



Quad-Lock (England) Ltd.  
Unit B3, 1 Maws Centre  
Jackfield, Shropshire  
TF8 7LS

Tel : 01952 884931  
Fax : 01952 883285  
www.quadlock.co.uk

### SHUTTERED CORBEL DETAIL

|                |          |                       |                         |
|----------------|----------|-----------------------|-------------------------|
| DATE:          | 06-2010  | SCALE:                | nts                     |
| REVISION NO:   | -        | PROJECT:              | N/A                     |
| REVISION DATE: | -        | CUSTOMER:             | N/A                     |
| DRAWN BY:      | M BAILEY | APPROVED BY:          |                         |
| REVISED BY:    | -        | REVISION APPROVED BY: |                         |
|                |          |                       | DRAWING NO:<br>10.01.02 |

DUE TO VARIANCES IN LOCAL CODES, CONSTRUCTION PRACTICES AND REQUIREMENTS ALL DETAILS SHALL BE CONSTRUCTED IN ACCORDANCE WITH SUCH LOCAL CODES, CONSTRUCTION PRACTICES, AND REQUIREMENTS REGARDLESS OF CONSTRUCTION DETAIL SHOWN IN DRAWING. QUAD-LOCK BUILDING SYSTEMS LTD. RESERVES THE RIGHT TO CHANGE INFORMATION SHOWN WITHOUT NOTICE.