

## U - 0.28 WIDE WALL CONFIGURATIONS

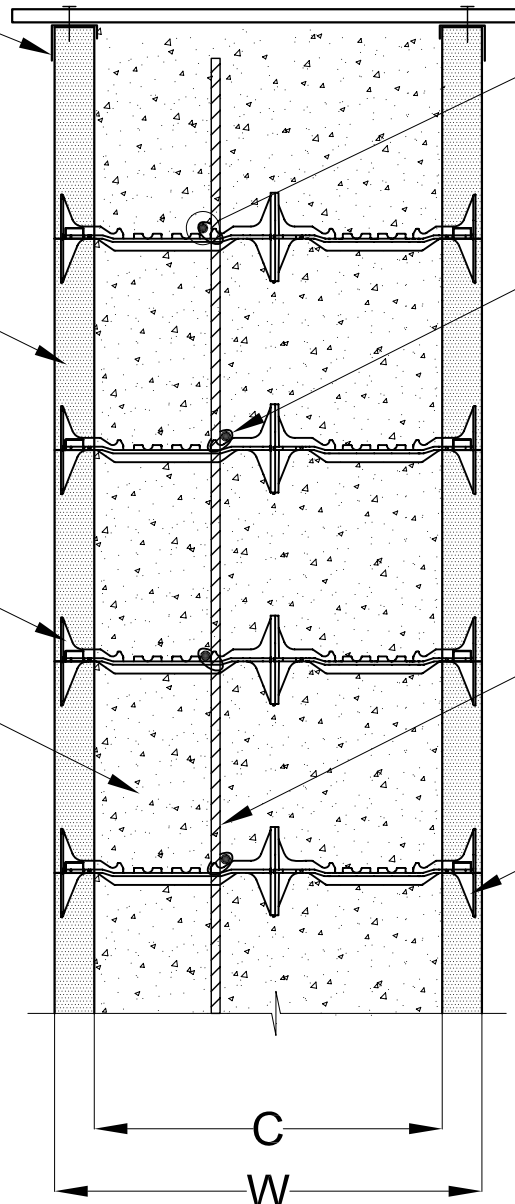
| WIDE WALL CONFIGURATION      | WALL WIDTH<br><b>W</b>                   | WALL CAVITY<br><b>C</b>                  |
|------------------------------|--|--|
| 4" Black Tie + Tie Extender  | 20 <sup>1</sup> / <sub>4</sub> " (514mm) | 15 <sup>3</sup> / <sub>4</sub> " (400mm) |
| 6" Blue Tie + Tie Extender   | 22 <sup>1</sup> / <sub>4</sub> " (565mm) | 17 <sup>3</sup> / <sub>4</sub> " (451mm) |
| 8" Yellow Tie + Tie Extender | 24 <sup>1</sup> / <sub>4</sub> " (616mm) | 19 <sup>3</sup> / <sub>4</sub> " (502mm) |
| 10" Green Tie + Tie Extender | 26 <sup>1</sup> / <sub>4</sub> " (667mm) | 21 <sup>3</sup> / <sub>4</sub> " (552mm) |
| 12" Red Tie + Tie Extender   | 28 <sup>1</sup> / <sub>4</sub> " (718mm) | 23 <sup>3</sup> / <sub>4</sub> " (603mm) |

TOP OF WALL FINISH  
CUT KNOBS OFF  
PLACE 1x4 CLEATS @ 48" (1219.2mm) O.C.  
FASTEN TO METAL TRACK AS SHOWN

QUAD-LOCK PANEL

QUAD-LOCK TIE EXTENDER

REINFORCED CONCRETE CORE



HORIZONTAL REINFORCEMENT  
PLACED ALTERNATELY TO  
ENGINEERS SPECIFICATION

TIE HOR. STEEL TO VER. STEEL  
FOR SUPPORT @ 48" (1219.2mm) O.C. TO  
PREVENT DEFLECTION IN EXTENDED TIE

VERTICAL REINFORCEMENT  
TO ENGINEERS SPECIFICATION

QUAD-LOCK TIE

1  
9.5

### CONSTRUCTION DETAIL



Quad-Lock (England) Ltd.  
Unit B3, 1 Maws Centre  
Jackfield, Shropshire  
TF8 7LS

Tel : 01952 884931  
Fax : 01952 883285  
www.quadlock.co.uk

DUE TO VARIANCES IN LOCAL CODES, CONSTRUCTION PRACTICES AND REQUIREMENTS ALL DETAILS SHALL BE CONSTRUCTED IN ACCORDANCE WITH SUCH LOCAL CODES, CONSTRUCTION PRACTICES, AND REQUIREMENTS REGARDLESS OF CONSTRUCTION DETAIL SHOWN IN DRAWING. QUAD-LOCK BUILDING SYSTEMS LTD. RESERVES THE RIGHT TO CHANGE INFORMATION SHOWN WITHOUT NOTICE.

## QUAD-LOCK WIDE WALLS

|                |             |                       |                           |
|----------------|-------------|-----------------------|---------------------------|
| DATE:          | 2006-03-23  | SCALE:                | nts                       |
| REVISION NO:   | R-01        | PROJECT:              | N/A                       |
| REVISION DATE: | SEP 2009    | CUSTOMER:             | N/A                       |
| DRAWN BY:      | Z. PROSTRAN | APPROVED BY:          | D. J. BENNION             |
| REVISED BY:    | M BAILEY    | REVISION APPROVED BY: | P TOWNEND                 |
|                |             |                       | DRAWING NO:<br><b>9.5</b> |