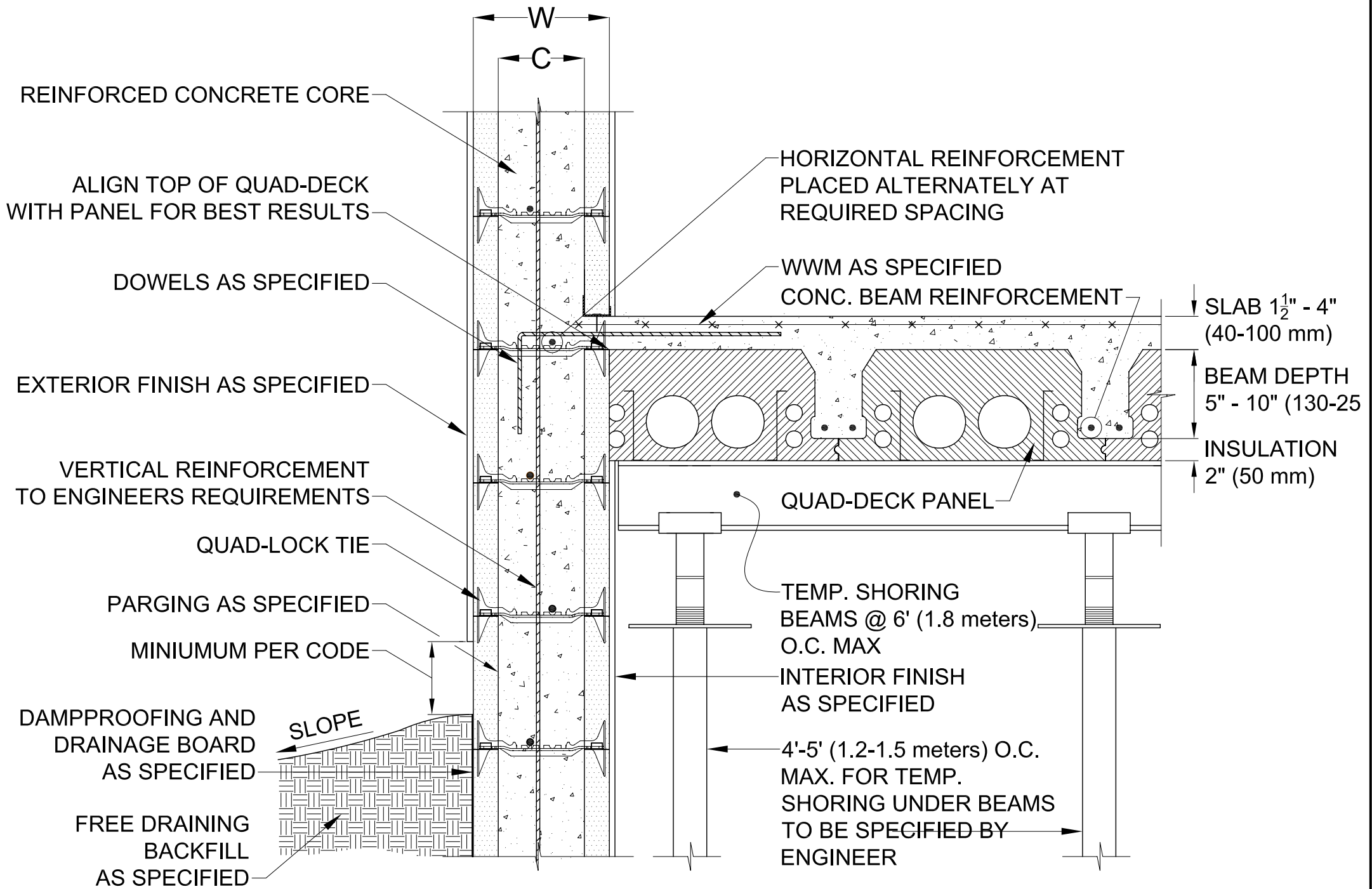


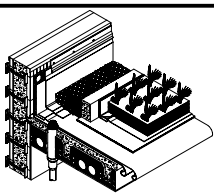
## R-22 WALL CONFIGURATION

NOMINAL CONC. WIDTH - TIE SIZE	WALL WIDTH <b>W</b>	WALL CAVITY <b>C</b>
4" (100mm)	8 $\frac{1}{4}$ " (210mm)	3 $\frac{3}{4}$ " (96mm)
6" (150mm)	10 $\frac{1}{4}$ " (260mm)	5 $\frac{3}{4}$ " (146mm)
8" (200mm)	12 $\frac{1}{4}$ " (311mm)	7 $\frac{3}{4}$ " (197mm)
10" (250mm)	14 $\frac{1}{4}$ " (362mm)	9 $\frac{3}{4}$ " (248mm)
12" (300mm)	16 $\frac{1}{4}$ " (413mm)	11 $\frac{3}{4}$ " (299mm)



1 CONNECTION DETAIL  
4.2

**QUAD-LOCK**<sup>®</sup>  
Insulating Concrete Forms



Quad-Lock (England) Ltd.  
Unit B3, 1 Maws Centre  
Jackfield, Shropshire  
TF8 7LS

Tel : 01952 884931  
Fax : 01952 883285  
www.quadlock.co.uk

DUE TO VARIANCES IN LOCAL CODES, CONSTRUCTION PRACTICES AND REQUIREMENTS ALL DETAILS SHALL BE CONSTRUCTED IN ACCORDANCE WITH SUCH LOCAL CODES, CONSTRUCTION PRACTICES, AND REQUIREMENTS REGARDLESS OF CONSTRUCTION DETAIL SHOWN IN DRAWING. QUAD-LOCK BUILDING SYSTEMS LTD. RESERVES THE RIGHT TO CHANGE INFORMATION SHOWN WITHOUT NOTICE.

## QUAD-DECK FLOOR SYSTEM EXTERNAL BEARING WALL JOIST PARALLEL

DATE:	2005-07-23	SCALE:	nts
REVISION NO:	R-03	PROJECT:	N/A
REVISION DATE:	SEP 2009	CUSTOMER:	N/A
DRAWN BY:	Z. PROSTRAN	APPROVED BY:	D. J. BENNION
REVISED BY:	M BAILEY	REVISION APPROVED BY:	P TOWNEND
			DRAWING NO: <b>4.2</b>