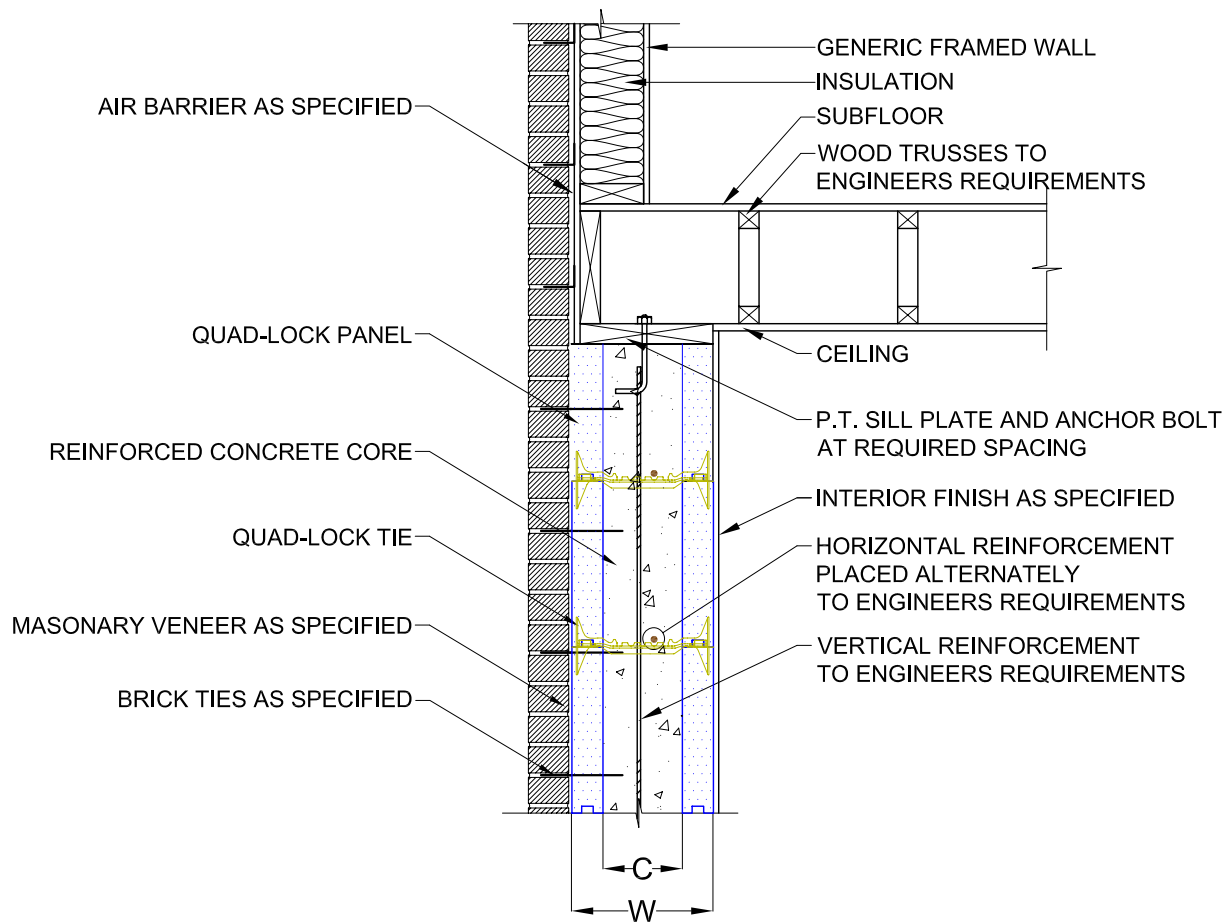


U - 0.28 WALL CONFIGURATION		
NOMINAL CONC. WIDTH - TIE SIZE	WALL WIDTH <b>W</b>	WALL CAVITY <b>C</b>
4" (100mm)	8 $\frac{1}{4}$ " (210mm)	3 $\frac{3}{4}$ " (96mm)
6" (150mm)	10 $\frac{1}{4}$ " (260mm)	5 $\frac{3}{4}$ " (146mm)
8" (200mm)	12 $\frac{1}{4}$ " (311mm)	7 $\frac{3}{4}$ " (197mm)
10" (250mm)	14 $\frac{1}{4}$ " (362mm)	9 $\frac{3}{4}$ " (248mm)
12" (300mm)	16 $\frac{1}{4}$ " (413mm)	11 $\frac{3}{4}$ " (299mm)



1 SECTION DETAIL  
2.6



Quad-Lock (England) Ltd.  
Unit B3, 1 Maws Centre  
Jackfield, Shropshire  
TF8 7LS

Tel : 01952 884931  
Fax : 01952 883265  
www.quadlock.co.uk

## WOOD TRUSSES PARALLEL TO WALL

DATE:	2005-07-23	SCALE:	nts
REVISION NO.:	R-04	PROJECT:	N/A
REVISION DATE:	March 2009	CUSTOMER:	N/A
DRAWN BY:	Z. PROSTRAN	APPROVED BY:	D. J. BENNION
REVISED BY:	M. BAILEY	REVISION APPROVED BY:	
			DRAWING NO: <b>2.6</b>

DUE TO VARIANCES IN LOCAL CODES, CONSTRUCTION PRACTICES AND REQUIREMENTS ALL DETAILS SHALL BE CONSTRUCTED IN ACCORDANCE WITH SUCH LOCAL CODES, CONSTRUCTION PRACTICES, AND REQUIREMENTS REGARDLESS OF CONSTRUCTION DETAIL SHOWN IN DRAWING. QUAD-LOCK BUILDING SYSTEMS LTD. RESERVES THE RIGHT TO CHANGE INFORMATION SHOWN WITHOUT NOTICE.