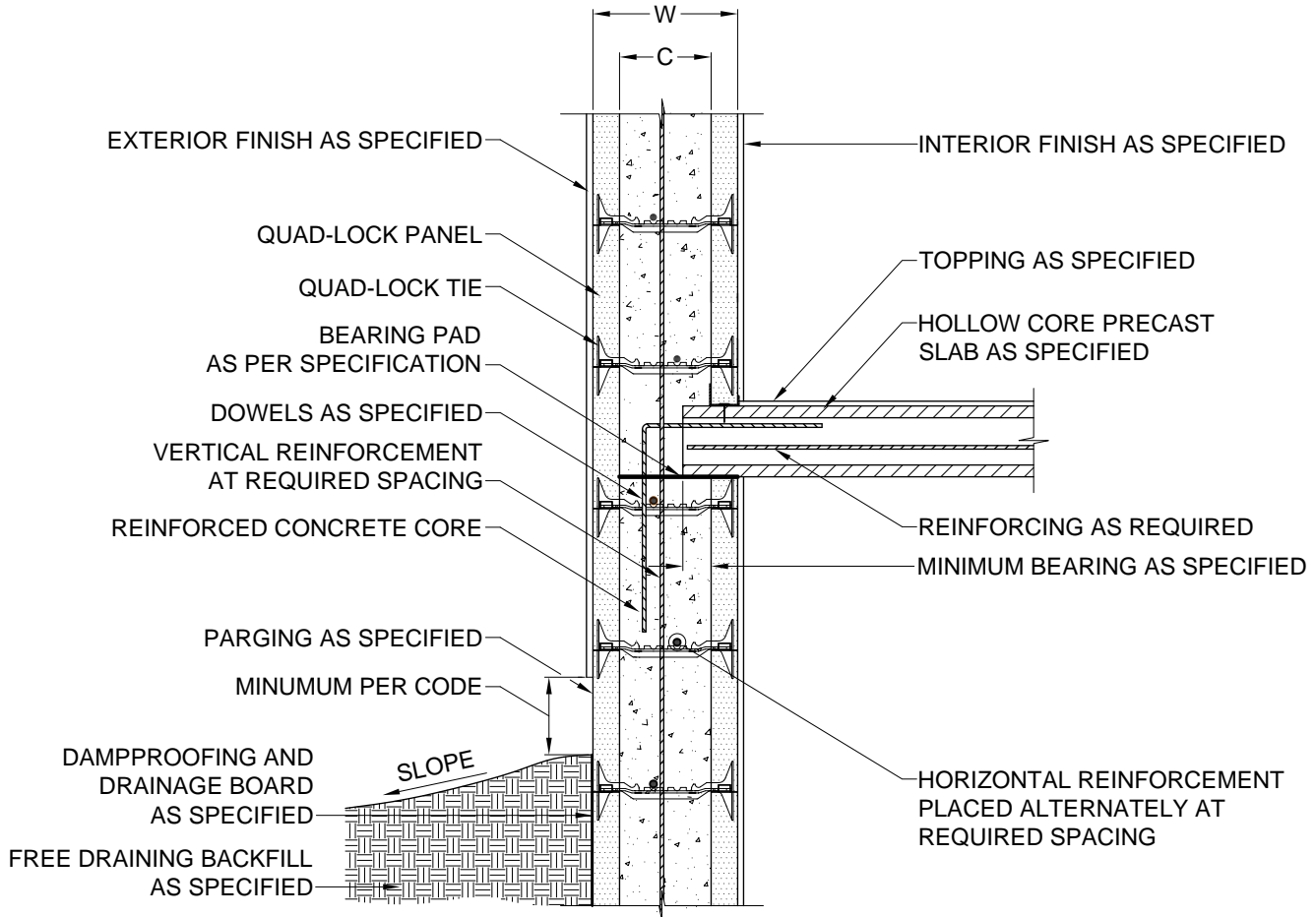


R-22 WALL CONFIGURATION		
NOMINAL CONC. WIDTH - TIE SIZE	WALL WIDTH W	WALL CAVITY C
4" (100mm)	8 $\frac{1}{4}$ " (210mm)	3 $\frac{3}{4}$ " (96mm)
6" (150mm)	10 $\frac{1}{4}$ " (260mm)	5 $\frac{3}{4}$ " (146mm)
8" (200mm)	12 $\frac{1}{4}$ " (311mm)	7 $\frac{3}{4}$ " (197mm)
10" (250mm)	14 $\frac{1}{4}$ " (362mm)	9 $\frac{3}{4}$ " (248mm)
12" (300mm)	16 $\frac{1}{4}$ " (413mm)	11 $\frac{3}{4}$ " (299mm)



1
5.3
**CONNECTION DETAIL**  
 3/4" = 1'

**QUAD-LOCK**<sup>®</sup> BUILDING SYSTEMS

Quad-Lock Building Systems Ltd.  
7398 - 132nd Street  
Surrey, BC V3W 4M7  
Canada

888.711.5625 - Toll Free  
604.590.3111  
604.590.8412 - fax  
www.quadlock.com

**HOLLOW CORE PRECAST FLOOR SLAB  
EXTERNAL BEARING WALL**

DATE:	2005-07-23	SCALE:	3/4" = 1'-0"
REVISION NO.:	R-03	PROJECT:	N/A
REVISION DATE:	2005-08-24	CUSTOMER:	N/A
DRAWN BY:	Z. PROSTRAN	APPROVED BY:	D. J. BENNION
			<b>5.3</b>

DUE TO VARIANCES IN LOCAL CODES, CONSTRUCTION PRACTICES AND REQUIREMENTS ALL DETAILS SHALL BE CONSTRUCTED IN ACCORDANCE WITH SUCH LOCAL CODES, CONSTRUCTION PRACTICES, AND REQUIREMENTS REGARDLESS OF CONSTRUCTION DETAIL SHOWN IN DRAWING.  
QUAD-LOCK BUILDING SYSTEMS LTD. RESERVES THE RIGHT TO CHANGE INFORMATION SHOWN WITHOUT NOTICE.