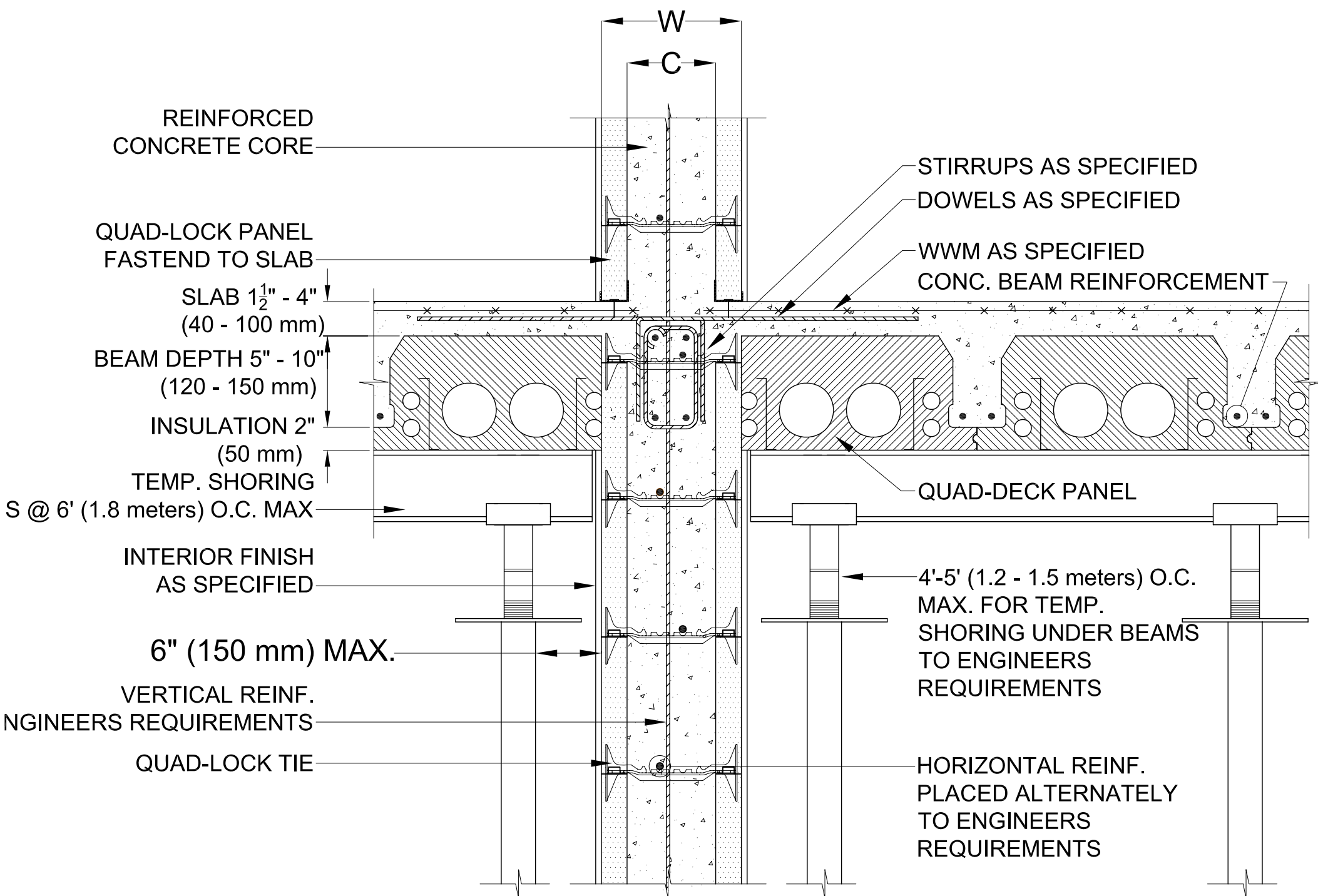


U - 0.28 WALL CONFIGURATION

| NOMINAL CONC. WIDTH - TIE SIZE | WALL WIDTH W | WALL CAVITY C |
|--------------------------------|--|--|
| 4" (100mm) | 8 ¹ / ₄ " (210mm) | 3 ³ / ₄ " (96mm) |
| 6" (150mm) | 10 ¹ / ₄ " (260mm) | 5 ³ / ₄ " (146mm) |
| 8" (200mm) | 12 ¹ / ₄ " (311mm) | 7 ³ / ₄ " (197mm) |
| 10" (250mm) | 14 ¹ / ₄ " (362mm) | 9 ³ / ₄ " (248mm) |
| 12" (300mm) | 16 ¹ / ₄ " (413mm) | 11 ³ / ₄ " (299mm) |



1
4.4 CONNECTION DETAIL



Quad-Lock (England) Ltd.
Unit B3, 1 Maws Centre
Jackfield, Shropshire
TF8 7LS

Tel : 01952 884931
Fax : 01952 883285
www.quadlock.co.uk

DUE TO VARIANCES IN LOCAL CODES, CONSTRUCTION PRACTICES AND REQUIREMENTS ALL DETAILS SHALL BE CONSTRUCTED IN ACCORDANCE WITH SUCH LOCAL CODES, CONSTRUCTION PRACTICES, AND REQUIREMENTS REGARDLESS OF CONSTRUCTION DETAIL SHOWN IN DRAWING. QUAD-LOCK BUILDING SYSTEMS LTD. RESERVES THE RIGHT TO CHANGE INFORMATION SHOWN WITHOUT NOTICE.

QUAD-DECK FLOOR SYSTEM INTERNAL BEARING WALL JOIST PARALLEL

| | | | |
|----------------|-------------|-----------------------|---------------|
| DATE: | 2005-07-23 | SCALE: | nts |
| REVISION NO: | R-03 | PROJECT: | N/A |
| REVISION DATE: | SEP 2009 | CUSTOMER: | N/A |
| DRAWN BY: | Z. PROSTRAN | APPROVED BY: | D. J. BENNION |
| REVISED BY: | M BAILEY | REVISION APPROVED BY: | P TOWNEND |

DRAWING NO:
4.4