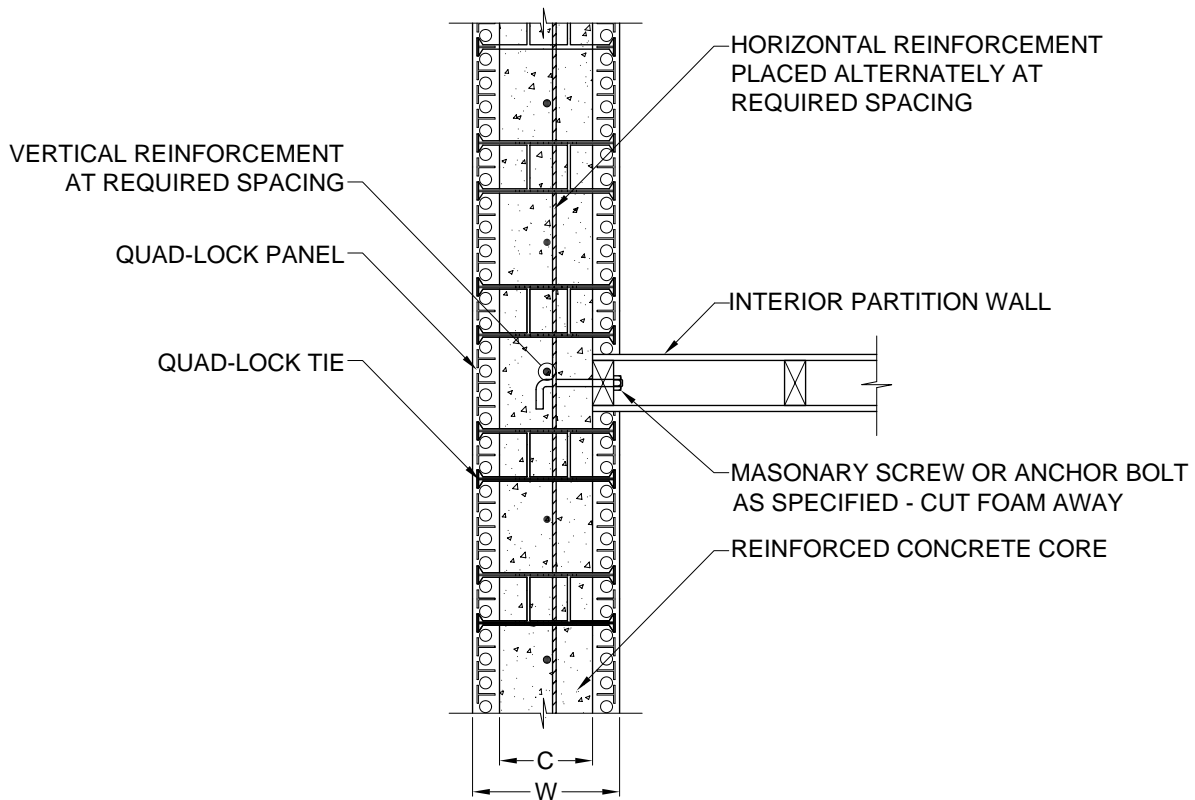


| R-22 WALL CONFIGURATION | | |
|--------------------------------|--|--|
| NOMINAL CONC. WIDTH - TIE SIZE | WALL WIDTH W | WALL CAVITY C |
| 4" (100mm) | 8 ¹ / ₄ " (210mm) | 3 ³ / ₄ " (96mm) |
| 6" (150mm) | 10 ¹ / ₄ " (260mm) | 5 ³ / ₄ " (146mm) |
| 8" (200mm) | 12 ¹ / ₄ " (311mm) | 7 ³ / ₄ " (197mm) |
| 10" (250mm) | 14 ¹ / ₄ " (362mm) | 9 ³ / ₄ " (248mm) |
| 12" (300mm) | 16 ¹ / ₄ " (413mm) | 11 ³ / ₄ " (299mm) |



1
9.4
CONNECTION DETAIL
 3/4" = 1'

QUAD-LOCK[®] BUILDING SYSTEMS

Quad-Lock Building Systems Ltd.
 7398 - 132nd Street
 Surrey, BC V3W 4M7
 Canada

888.711.5625 - Toll Free
 604.590.3111
 604.590.8412 - fax
 www.quadlock.com

INTERIOR PARTITION WALL CONNECTION DIRECT TO CONCRETE PLAN VIEW

| | | | |
|----------------|-------------|--------------|---------------|
| DATE: | 2005-07-23 | SCALE: | 3/4" = 1'-0" |
| REVISION NO.: | R-03 | PROJECT: | N/A |
| REVISION DATE: | 2005-08-24 | CUSTOMER: | N/A |
| DRAWN BY: | Z. PROSTRAN | APPROVED BY: | D. J. BENNION |
| | | | 9.4 |

DUE TO VARIANCES IN LOCAL CODES, CONSTRUCTION PRACTICES AND REQUIREMENTS ALL DETAILS SHALL BE CONSTRUCTED IN ACCORDANCE WITH SUCH LOCAL CODES, CONSTRUCTION PRACTICES, AND REQUIREMENTS REGARDLESS OF CONSTRUCTION DETAIL SHOWN IN DRAWING. QUAD-LOCK BUILDING SYSTEMS LTD. RESERVES THE RIGHT TO CHANGE INFORMATION SHOWN WITHOUT NOTICE.