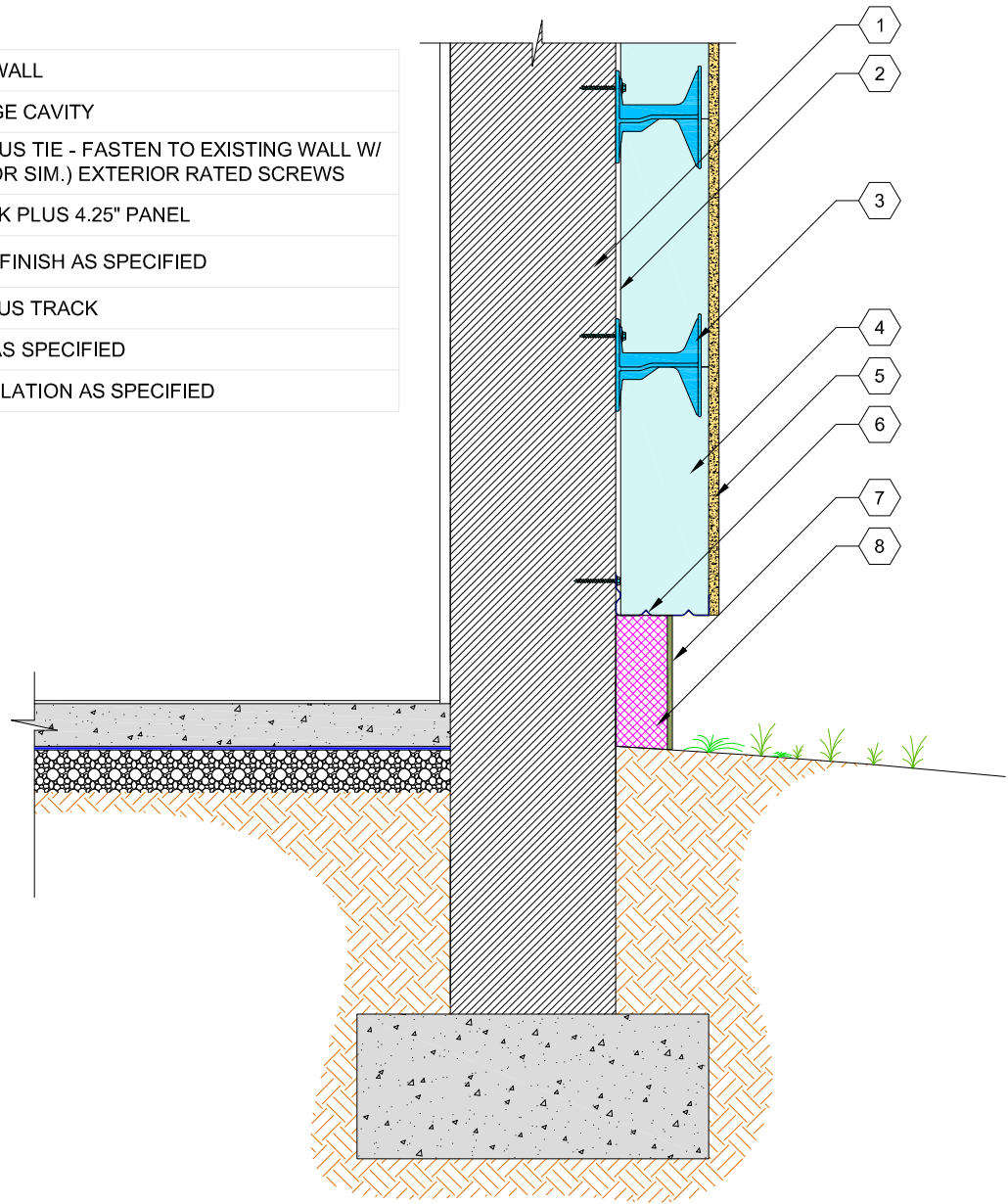


1.	EXISTING WALL
2.	1/4" DRAINAGE CAVITY
3.	R-ETRO PLUS TIE - FASTEN TO EXISTING WALL W/ TAPCON (OR SIM.) EXTERIOR RATED SCREWS
4.	QUAD-LOCK PLUS 4.25" PANEL
5.	EXTERIOR FINISH AS SPECIFIED
6.	R-ETRO PLUS TRACK
7.	PARGING AS SPECIFIED
8.	RIGID INSULATION AS SPECIFIED



QUAD-LOCK
Building Systems Ltd.

Quad-Lock Building Systems Ltd.
7398 - 132nd Street
Surrey, BC V3W 4M7
Canada

888.711.5625 - Toll Free
604.590.3111
604.590.8412 - fax
www.quadlock.com

IT IS THE RESPONSIBILITY OF THE USER TO COMPLY WITH ALL APPLICABLE REGULATIONS AND BUILDING CODE REQUIREMENTS CONCERNING THE USE OF THESE PRODUCTS.
IT IS FURTHER THE RESPONSIBILITY OF THE USER TO RESEARCH AND UNDERSTAND SAFE METHODS OF USE AND HANDLING OF THESE PRODUCTS.

R-ETRO EXTERIOR FOUNDATION DETAIL

DATE:	2009-01-21	SCALE:	NOT TO SCALE
REVISION NO.:	R-02	PROJECT:	
REVISION DATE:	2009-07-10	CUSTOMER:	
DRAWN BY:	Z. PROSTRAN	APPROVED BY:	H.M.K. & D.J.B.
			DRAWING NO.:
			RE-101