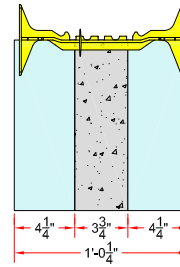
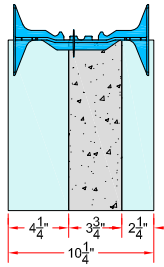
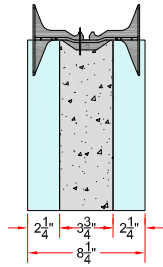


R-22* WALL
EXACT WIDTHS

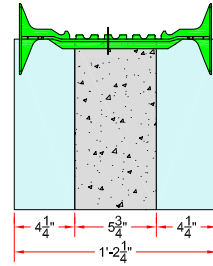
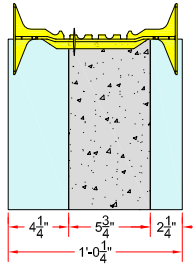
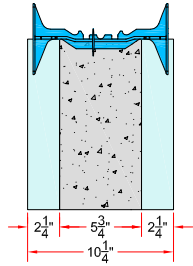
R-30 WALL
EXACT WIDTHS

R-38 WALL
EXACT WIDTHS

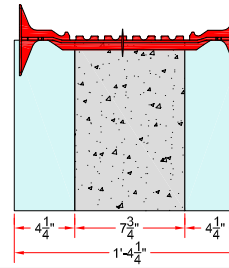
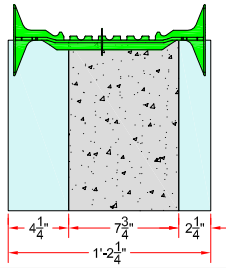
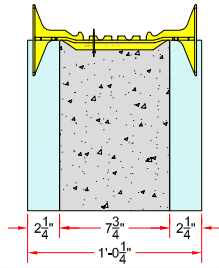
4"
(NOMINAL)



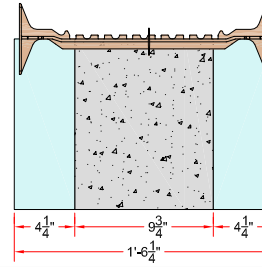
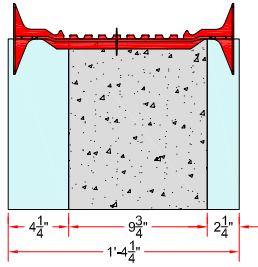
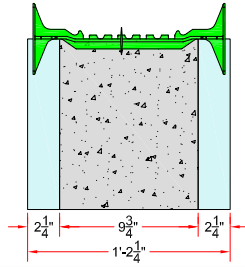
6"
(NOMINAL)



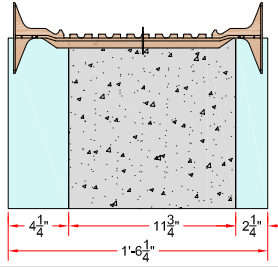
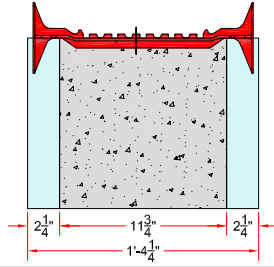
8"
(NOMINAL)



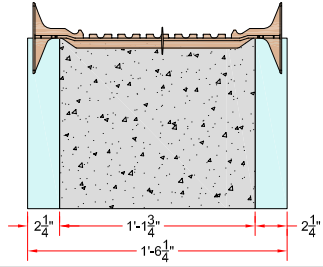
10"
(NOMINAL)



12"
(NOMINAL)



14"
(NOMINAL)



* REFER TO R-VALUE DRAWING FOR MORE DETAILS.

NOTE:
EXTENDER TIE ADDS EXACTLY 12" TO A STANDARD WALL CAVITY.

I.E. COMBINING AN EXTENDER TIE AND A GREEN TIE ON R-30 WALL
THE CONCRETE CAVITY BECOMES 19 3/4" AND OVERALL WALL WIDTH 26 1/4".



Quad-Lock Building Systems Ltd.
7398 - 132nd Street
Surrey, BC V3W 4M7
Canada
888.711.5625 - Toll Free
604.590.3111
604.590.8412 - fax
www.quadlock.com

QUAD-LOCK WALL WIDTHS

DATE:	2009-01-21	SCALE:	NOT TO SCALE
REVISION NO.:	R-02	PROJECT:	
REVISION DATE:	2009-07-10	CUSTOMER:	
DRAWN BY:	Z. PROSTRAN	APPROVED BY:	H.M.K. & D.J.B.
			DRAWING NO.:
			QL-712

IT IS THE RESPONSIBILITY OF THE USER TO COMPLY WITH ALL APPLICABLE REGULATIONS AND BUILDING CODE REQUIREMENTS CONCERNING THE USE OF THESE PRODUCTS.
IT IS FURTHER THE RESPONSIBILITY OF THE USER TO RESEARCH AND UNDERSTAND SAFE METHODS OF USE AND HANDLING OF THESE PRODUCTS.