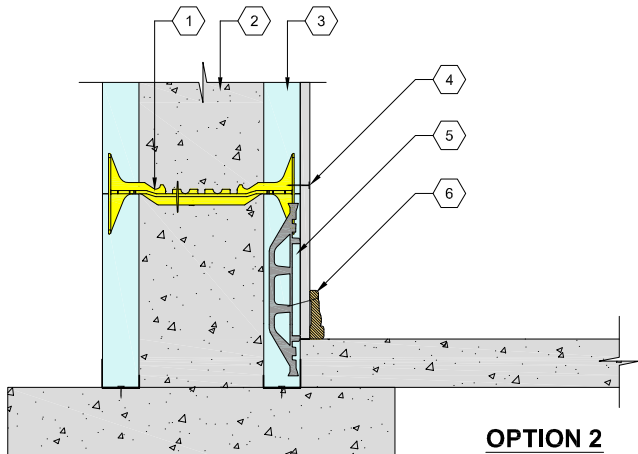
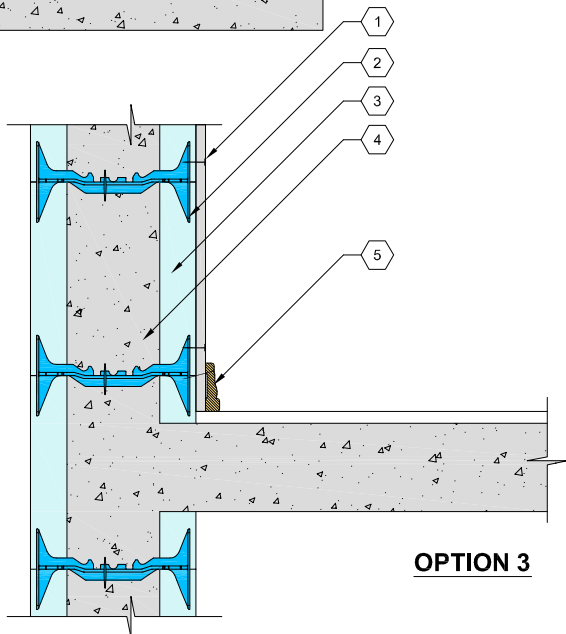


- | |
|---|
| 1. QUAD-LOCK REGULAR 2.25" PANEL |
| 2. FASTEN INTERIOR FINISH TO QUAD-LOCK TIES |
| 3. QUAD-LOCK TIE (8" YELLOW SHOWN) |
| 4. REINFORCED CONCRETE CORE |
| 5. CONTINUOUS PLYWOOD STRIP (TO BE SHORTER THAN MOULDING) FASTEN TO QUAD-LOCK METAL-TRACK |
| 6. BASEBOARD MOULDING STRIP FASTEN TO PLYWOOD |



- | |
|--|
| 1. QUAD-LOCK TIE (8" YELLOW SHOWN) |
| 2. REINFORCED CONCRETE CORE |
| 3. QUAD-LOCK REGULAR 2.25" PANEL |
| 4. FASTEN INTERIOR FINISH TO QUAD-LOCK TIES QUAD-LOCK TIES |
| 5. QUAD-LOCK FS 2.25" PANEL (WITH FASTENING STRIPS @ 12" O.C.) |
| 6. BASEBOARD MOULDING STRIP - FASTEN TO FS PANEL |



- | |
|---|
| 1. FASTEN INTERIOR FINISH TO QUAD-LOCK TIES |
| 2. QUAD-LOCK TIE (6" BLUE SHOWN) |
| 3. QUAD-LOCK REGULAR 2.25" PANEL |
| 4. REINFORCED CONCRETE CORE |
| 5. BASEBOARD MOULDING STRIP - FASTEN TO QUAD-LOCK TIE FLANGES |



Quad-Lock Building Systems Ltd.
 7398 - 132nd Street
 Surrey, BC V3W 4M7
 Canada
 888.711.5625 - Toll Free
 604.590.3111
 604.590.8412 - fax
 www.quadlock.com

MOULDING TRIM ATTACHMENT DETAIL

DATE:	2009-01-21	SCALE:	NOT TO SCALE
REVISION NO.:	R-02	PROJECT:	
REVISION DATE:	2009-07-10	CUSTOMER:	
DRAWN BY:	Z. PROSTRAN	APPROVED BY:	H.M.K. & D.J.B.
			DRAWING NO.:
			QL-612

IT IS THE RESPONSIBILITY OF THE USER TO COMPLY WITH ALL APPLICABLE REGULATIONS AND BUILDING CODE REQUIREMENTS CONCERNING THE USE OF THESE PRODUCTS.
 IT IS FURTHER THE RESPONSIBILITY OF THE USER TO RESEARCH AND UNDERSTAND SAFE METHODS OF USE AND HANDLING OF THESE PRODUCTS.