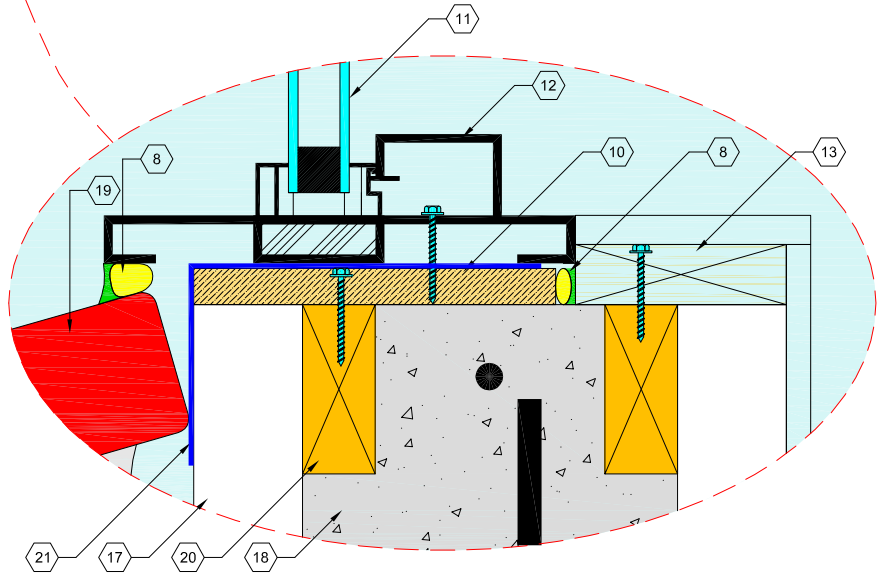
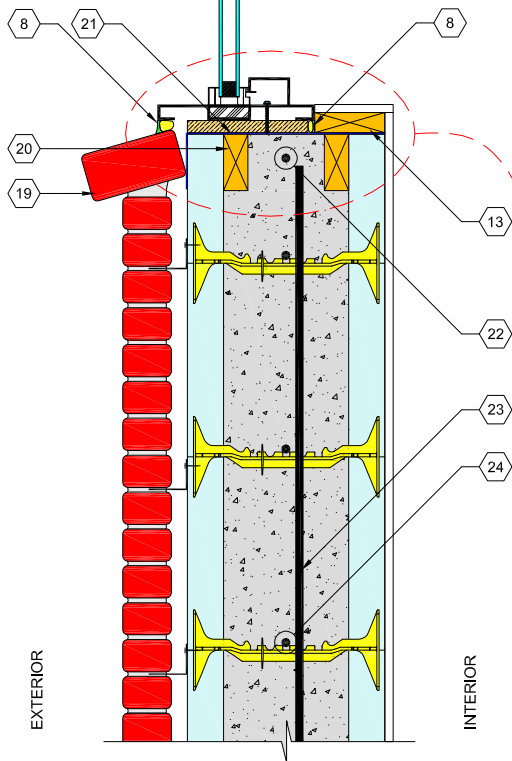


1. EXTERIOR BRICK FINISH AS SPECIFIED
2. AIR SPACE AS SPECIFIED
3. BRICK TIES (SPACING AS SPECIFIED)
4. INSERT FLASHING IN SAW KERF AND CAULK
5. FASTEN FLASHING TO QUAD-LOCK TIE FLANGES
6. FLASHING
7. STEEL ANGLE LINTEL FOR BRICK SUPPORT
8. CAULKING AND BACKER ROD
9. LINTEL REINFORCEMENT AND STIRRUPS AS SPECIFIED
10. PLYWOOD LINER
11. GLAZING
12. WINDOW FRAME BY OTHERS - FASTEN TO PLYWOOD LINER AS SHOWN
13. JAMB EXTENSION
14. PRESSURE TREATED INTERNAL WOOD BUCK FOR INSET WINDOW ATTACHMENT FASTENED TO CONCRETE VIA CAST IN PLACE SCREWS ON CONTACT SIDE
15. FASTEN INTERIOR WALL FINISH TO QUAD-LOCK TIE FLANGES
16. QUAD-LOCK TIE (8" YELLOW SHOWN)
17. QUAD-LOCK REGULAR 2.25" PANEL
18. REINFORCED CONCRETE CORE
19. BRICK FORMED SILL
20. SILL BUCK IS FORMED WITH 2 - 2x4'S ON EDGE TO ALLOW FOR CONCRETE MIX POUR
21. WATER PROOF WINDOW FLASHING MEMBRANE
22. SILL REINFORCEMENT AS SPECIFIED
23. VERTICAL REINFORCEMENT AS SPECIFIED
24. HORIZONTAL REINFORCEMENT AS SPECIFIED



QUAD-LOCK
Building Systems Ltd.

Quad-Lock Building Systems Ltd.
7398 - 132nd Street
Surrey, BC V3W 4M7
Canada

888.711.5625 - Toll Free
604.590.3111
604.590.8412 - fax
www.quadlock.com

IT IS THE RESPONSIBILITY OF THE USER TO COMPLY WITH ALL APPLICABLE REGULATIONS AND BUILDING CODE REQUIREMENTS CONCERNING THE USE OF THESE PRODUCTS.
IT IS FURTHER THE RESPONSIBILITY OF THE USER TO RESEARCH AND UNDERSTAND SAFE METHODS OF USE AND HANDLING OF THESE PRODUCTS.

HEAD AND SILL WINDOW DETAIL BRICK EXTERIOR FINISH

DATE:	2009-01-21	SCALE:	NOT TO SCALE
REVISION NO.:	R-02	PROJECT:	
REVISION DATE:	2009-07-10	CUSTOMER:	
DRAWN BY:	Z. PROSTRAN	APPROVED BY:	H.M.K. & D.J.B.
			DRAWING NO.:
			QL-408