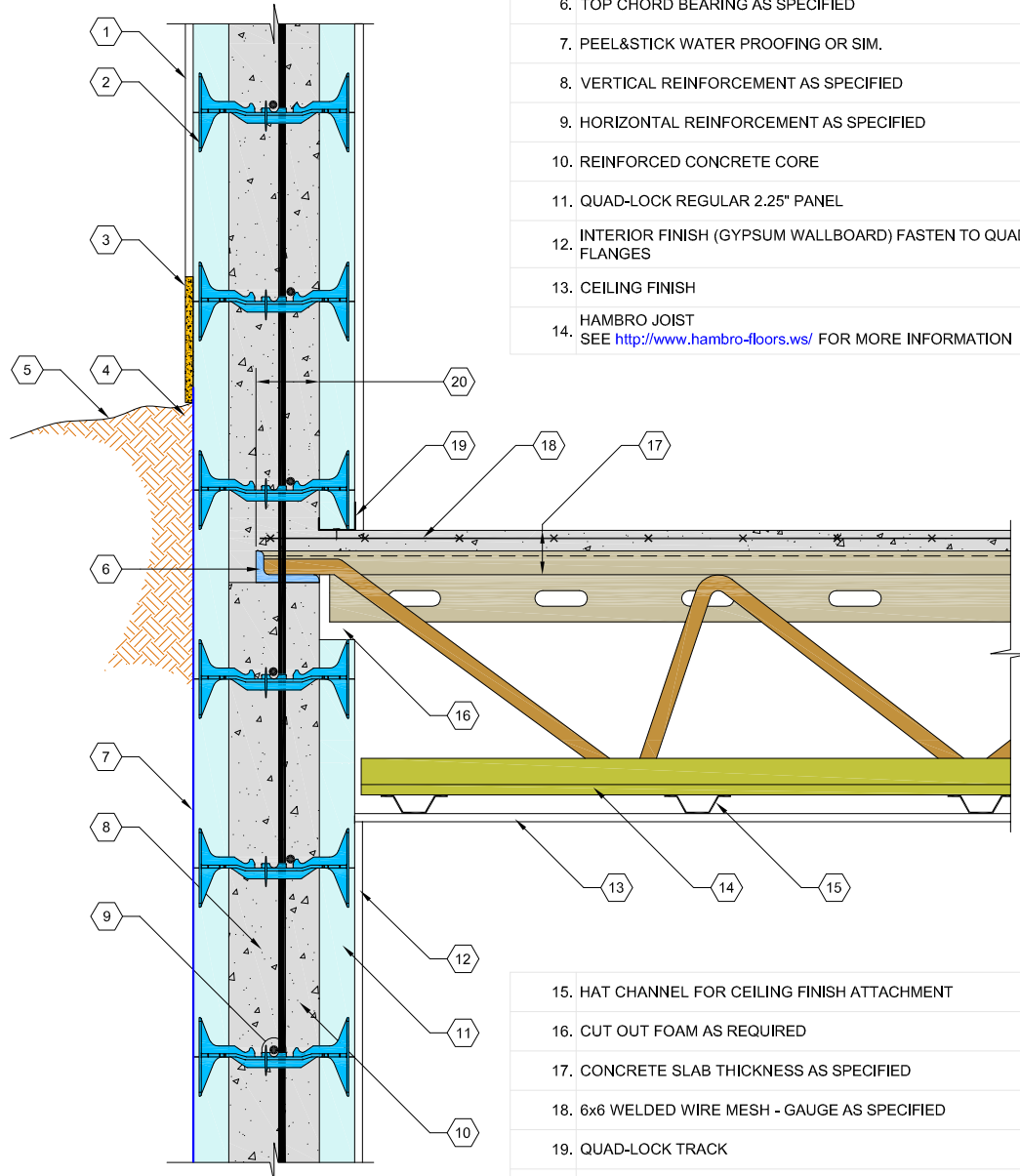


1. EXTERIOR FINISH AS SPECIFIED
2. QUAD-LOCK TIE (6" BLUE SHOWN)
3. PARGING AS SPECIFIED
4. COMPACTED FILL
5. SLOPE GRADE AWAY FROM WALL
6. TOP CHORD BEARING AS SPECIFIED
7. PEEL&STICK WATER PROOFING OR SIM.
8. VERTICAL REINFORCEMENT AS SPECIFIED
9. HORIZONTAL REINFORCEMENT AS SPECIFIED
10. REINFORCED CONCRETE CORE
11. QUAD-LOCK REGULAR 2.25" PANEL
12. INTERIOR FINISH (GYPSUM WALLBOARD) FASTEN TO QUAD-LOCK TIE FLANGES
13. CEILING FINISH
14. HAMBRO JOIST
SEE <http://www.hambro-floors.ws/> FOR MORE INFORMATION



15. HAT CHANNEL FOR CEILING FINISH ATTACHMENT
16. CUT OUT FOAM AS REQUIRED
17. CONCRETE SLAB THICKNESS AS SPECIFIED
18. 6x6 WELDED WIRE MESH - GAUGE AS SPECIFIED
19. QUAD-LOCK TRACK
20. MINIMUM HAMBRO JOIST BEARING = 3½"



Quad-Lock Building Systems Ltd.
 7398 - 132nd Street
 Surrey, BC V3W 4M7
 Canada
 888.711.5625 - Toll Free
 604.590.3111
 604.590.8412 - fax
 www.quadlock.com

HAMBRO JOISTS PERPENDICULAR TO WALL

DATE:	2009-01-21	SCALE:	NOT TO SCALE
REVISION NO.:	R-02	PROJECT:	
REVISION DATE:	2009-07-10	CUSTOMER:	
DRAWN BY:	Z. PROSTRAN	APPROVED BY:	H.M.K. & D.J.B.
			DRAWING NO.:
			QL-308

IT IS THE RESPONSIBILITY OF THE USER TO COMPLY WITH ALL APPLICABLE REGULATIONS AND BUILDING CODE REQUIREMENTS CONCERNING THE USE OF THESE PRODUCTS.
 IT IS FURTHER THE RESPONSIBILITY OF THE USER TO RESEARCH AND UNDERSTAND SAFE METHODS OF USE AND HANDLING OF THESE PRODUCTS.