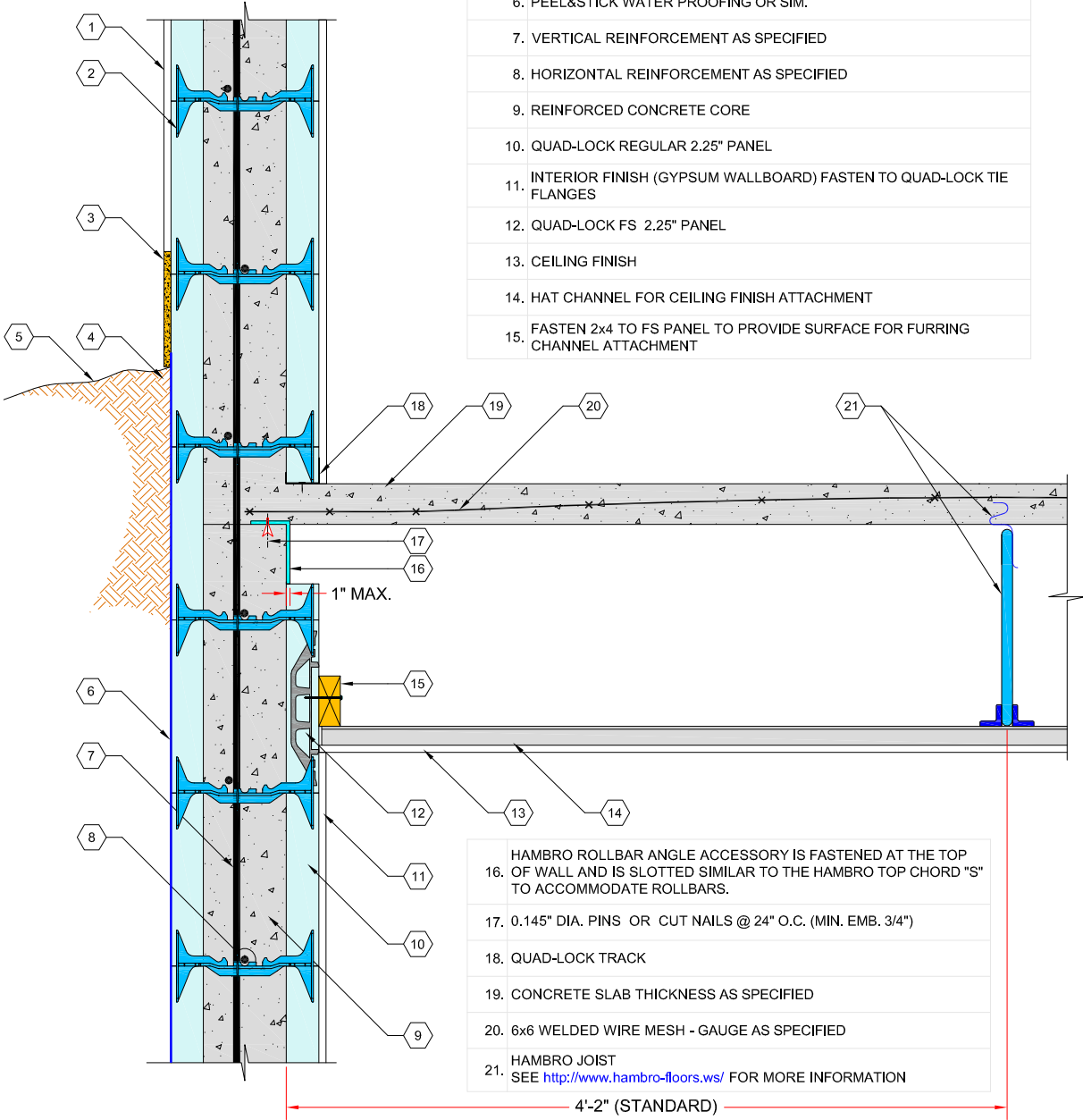


1. EXTERIOR FINISH AS SPECIFIED
2. QUAD-LOCK TIE (6" BLUE SHOWN)
3. PARGING AS SPECIFIED
4. COMPACTED FILL
5. SLOPE GRADE AWAY FROM WALL
6. PEEL&STICK WATER PROOFING OR SIM.
7. VERTICAL REINFORCEMENT AS SPECIFIED
8. HORIZONTAL REINFORCEMENT AS SPECIFIED
9. REINFORCED CONCRETE CORE
10. QUAD-LOCK REGULAR 2.25" PANEL
11. INTERIOR FINISH (GYPSUM WALLBOARD) FASTEN TO QUAD-LOCK TIE FLANGES
12. QUAD-LOCK FS 2.25" PANEL
13. CEILING FINISH
14. HAT CHANNEL FOR CEILING FINISH ATTACHMENT
15. FASTEN 2x4 TO FS PANEL TO PROVIDE SURFACE FOR FURRING CHANNEL ATTACHMENT



HAMBRO ROLLBAR ANGLE ACCESSORY IS FASTENED AT THE TOP OF WALL AND IS SLOTTED SIMILAR TO THE HAMBRO TOP CHORD "S" TO ACCOMMODATE ROLLBARS.
17. 0.145" DIA. PINS OR CUT NAILS @ 24" O.C. (MIN. EMB. 3/4")
18. QUAD-LOCK TRACK
19. CONCRETE SLAB THICKNESS AS SPECIFIED
20. 6x6 WELDED WIRE MESH - GAUGE AS SPECIFIED
21. HAMBRO JOIST SEE http://www.hambro-floors.ws/ FOR MORE INFORMATION

QUAD-LOCK
Building Systems Ltd.

Quad-Lock Building Systems Ltd.
7398 - 132nd Street
Surrey, BC V3W 4M7
Canada
888.711.5625 - Toll Free
604.590.3111
604.590.8412 - fax
www.quadlock.com

HAMBRO JOISTS PARALLEL TO WALL

DATE:	2009-01-21	SCALE:	NOT TO SCALE
REVISION NO.:	R-02	PROJECT:	
REVISION DATE:	2009-07-10	CUSTOMER:	
DRAWN BY:	Z. PROSTRAN	APPROVED BY:	H.M.K. & D.J.B.
			DRAWING NO.:
			QL-307

IT IS THE RESPONSIBILITY OF THE USER TO COMPLY WITH ALL APPLICABLE REGULATIONS AND BUILDING CODE REQUIREMENTS CONCERNING THE USE OF THESE PRODUCTS.
IT IS FURTHER THE RESPONSIBILITY OF THE USER TO RESEARCH AND UNDERSTAND SAFE METHODS OF USE AND HANDLING OF THESE PRODUCTS.