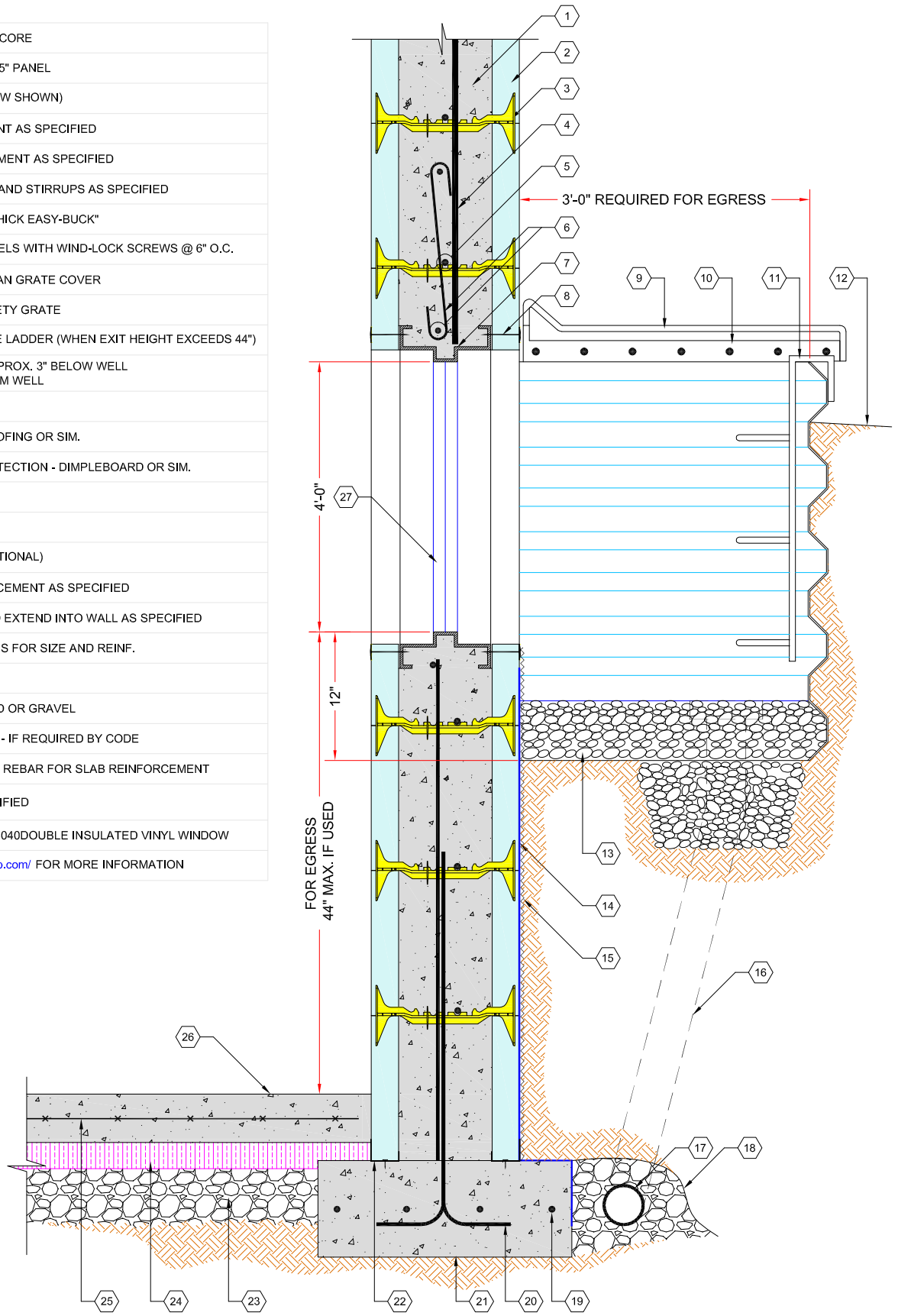


1. REINFORCED CONCRETE CORE
 2. QUAD-LOCK REGULAR 2.25" PANEL
 3. QUAD-LOCK TIE (8" YELLOW SHOWN)
 4. VERTICAL REINFORCEMENT AS SPECIFIED
 5. HORIZONTAL REINFORCEMENT AS SPECIFIED
 6. LINTEL REINFORCEMENT AND STIRRUPS AS SPECIFIED
 7. BOMAN KEMP 4040" 7.5" THICK EASY-BUCK"
 8. FASTEN BUCK TO QL PANELS WITH WIND-LOCK SCREWS @ 6" O.C.
 9. BOMAN KEMP CLEAR LEXAN GRATE COVER
 10. BOMAN KEMP STEEL SAFETY GRATE
 11. BOMAN KEMP 4'-0" ESCAPE LADDER (WHEN EXIT HEIGHT EXCEEDS 44")
 12. FINISHED GRADE LINE APPROX. 3" BELOW WELL SLOPE GRADE AWAY FROM WELL
 13. GRAVEL BASE
 14. PEEL&STICK WATER PROOFING OR SIM.
 15. OPTIONAL BACKFILL PROTECTION - DIMPLEBOARD OR SIM.
 16. WELL DRAIN SYSTEM
 17. PERIMETER DRAIN
 18. GEO-TEXTILE FABRIC (OPTIONAL)
 19. FOOTING STRIP REINFORCEMENT AS SPECIFIED
 20. ALTERNATE DOWELS AND EXTEND INTO WALL AS SPECIFIED
 21. FOOTING STRIP SEE PLANS FOR SIZE AND REINF.
 22. QUAD-LOCK TRACK
 23. ZERO COMPACTION SAND OR GRAVEL
 24. UNDER SLAB INSULATION - IF REQUIRED BY CODE
 25. WWM OR LONG. & TRANS. REBAR FOR SLAB REINFORCEMENT
 26. SLAB ON GRADE AS SPECIFIED
 27. BOMAN KEMP 7.5" THICK 4040DOUBLE INSULATED VINYL WINDOW
- SEE <http://www.boman-kemp.com/> FOR MORE INFORMATION



Quad-Lock Building Systems Ltd.
 7398 - 132nd Street
 Surrey, BC V3W 4M7
 Canada
 888.711.5625 - Toll Free
 604.590.3111
 604.590.8412 - fax
 www.quadlock.com

BASEMENT FOUNDATION WALL WINDOW WELL

DATE:	2009-01-21	SCALE:	NOT TO SCALE
REVISION NO.:	R-02	PROJECT:	
REVISION DATE:	2009-07-10	CUSTOMER:	
DRAWN BY:	Z. PROSTRAN	APPROVED BY:	H.M.K. & D.J.B.
			QL-117

IT IS THE RESPONSIBILITY OF THE USER TO COMPLY WITH ALL APPLICABLE REGULATIONS AND BUILDING CODE REQUIREMENTS CONCERNING THE USE OF THESE PRODUCTS.
 IT IS FURTHER THE RESPONSIBILITY OF THE USER TO RESEARCH AND UNDERSTAND SAFE METHODS OF USE AND HANDLING OF THESE PRODUCTS.