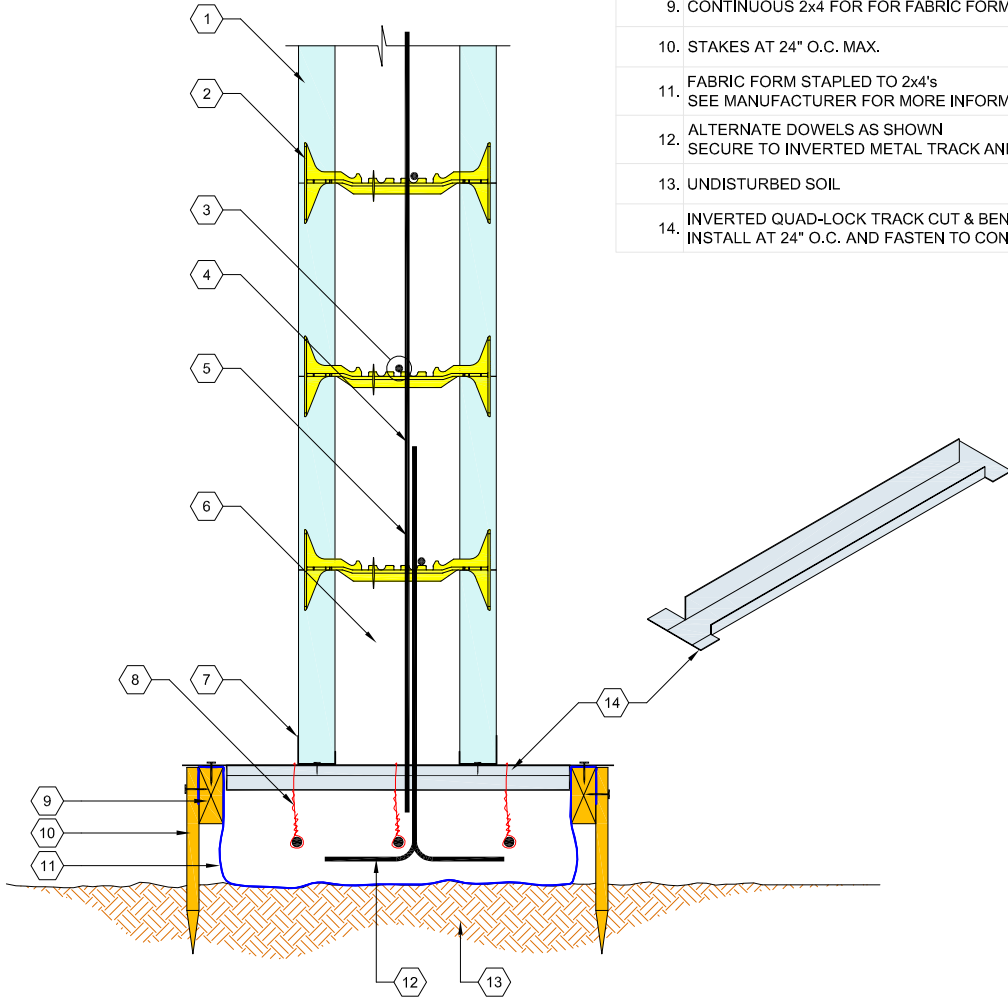


1. QUAD-LOCK REGULAR 2.25" PANEL
2. QUAD-LOCK TIE (8" YELLOW SHOWN)
3. HORIZONTAL REINFORCEMENT AS SPECIFIED ALTERNATE AROUND VERTICAL BARS
4. VERTICAL REINFORCEMENT AS SPECIFIED
5. REINFORCEMENT OVERLAP AS REQUIRED
6. CONCRETE CAVITY
7. QUAD-LOCK METAL TRACK - FASTEN TO TRACK BELOW @ 24" O.C.
8. SUSPEND FOOTING STRIP REINFORCEMENT W/ WIRE
9. CONTINUOUS 2x4 FOR FABRIC FORM SUPPORT
10. STAKES AT 24" O.C. MAX.
11. FABRIC FORM STAPLED TO 2x4's SEE MANUFACTURER FOR MORE INFORMATION
12. ALTERNATE DOWELS AS SHOWN SECURE TO INVERTED METAL TRACK AND QUAD-LOCK TIES
13. UNDISTURBED SOIL
14. INVERTED QUAD-LOCK TRACK CUT & BEND ENDS INSTALL AT 24" O.C. AND FASTEN TO CONTINUOUS 2x4



QUAD-LOCK
Building Systems Ltd.

Quad-Lock Building Systems Ltd.
7398 - 132nd Street
Surrey, BC V3W 4M7
Canada

888.711.5625 - Toll Free
604.590.3111
604.590.8412 - fax
www.quadlock.com

IT IS THE RESPONSIBILITY OF THE USER TO COMPLY WITH ALL APPLICABLE REGULATIONS AND BUILDING CODE REQUIREMENTS CONCERNING THE USE OF THESE PRODUCTS.

IT IS FURTHER THE RESPONSIBILITY OF THE USER TO RESEARCH AND UNDERSTAND SAFE METHODS OF USE AND HANDLING OF THESE PRODUCTS.

MONOLITHIC POUR SETUP FABRIC FORM

DATE:	2009-01-21	SCALE:	NOT TO SCALE
REVISION NO.:	R-02	PROJECT:	
REVISION DATE:	2009-07-10	CUSTOMER:	
DRAWN BY:	Z. PROSTRAN	APPROVED BY:	H.M.K. & D.J.B.
			DRAWING NO.:
			QL-115