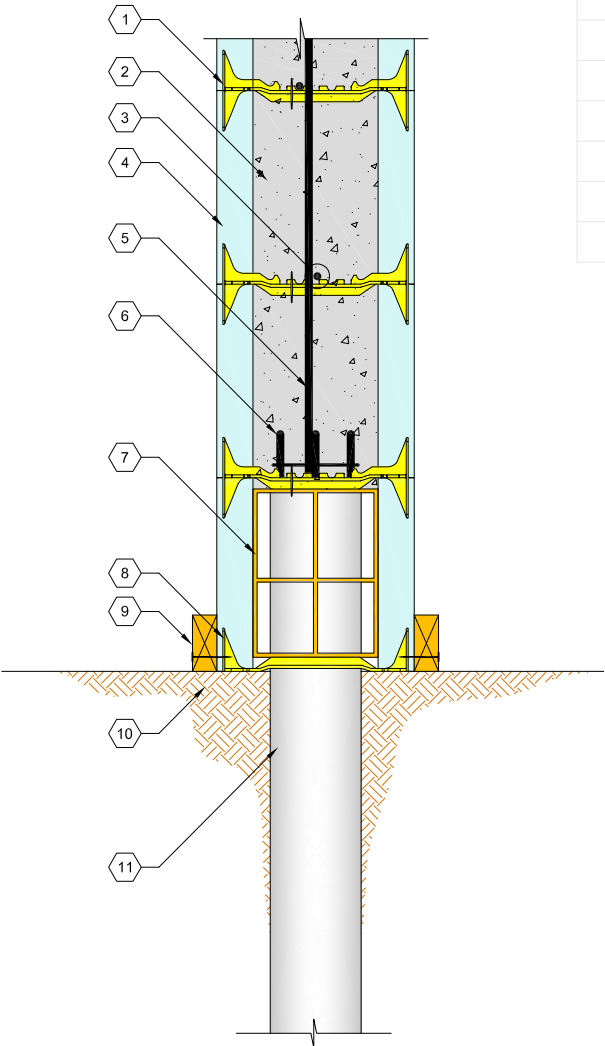


- | |
|---|
| 1. QUAD-LOCK TIE (8" YELLOW SHOWN) |
| 2. REINFORCED CONCRETE CORE |
| 3. HORIZONTAL REINFORCEMENT AS SPECIFIED ALTERNATE AROUND VERTICAL BARS |
| 4. QUAD-LOCK REGULAR 2.25" PANEL |
| 5. VERTICAL REINFORCEMENT AS SPECIFIED |
| 6. EXTEND PIER REINFORCEMENT INTO WALL |
| 7. VOID FORM AS PER MANUFACTURER |
| 8. QUAD-LOCK HALF TIE |
| 9. TEMPORARY CONTINUOUS 2x4 - FASTEN TO HALF TIE |
| 10. EXPANSIVE SOIL |
| 11. EXTEND PIER THROUGH VOID FORM AS SHOWN |



QUAD-LOCK
Building Systems Ltd.

Quad-Lock Building Systems Ltd.
7398 - 132nd Street
Surrey, BC V3W 4M7
Canada

888.711.5625 - Toll Free
604.590.3111
604.590.8412 - fax
www.quadlock.com

WALL TO PIER CONNECTION VOID FORM METHOD 2

IT IS THE RESPONSIBILITY OF THE USER TO COMPLY WITH ALL APPLICABLE REGULATIONS AND BUILDING CODE REQUIREMENTS CONCERNING THE USE OF THESE PRODUCTS.
IT IS FURTHER THE RESPONSIBILITY OF THE USER TO RESEARCH AND UNDERSTAND SAFE METHODS OF USE AND HANDLING OF THESE PRODUCTS.

DATE:	2009-01-21	SCALE:	NOT TO SCALE
REVISION NO.:	R-02	PROJECT:	
REVISION DATE:	2009-07-10	CUSTOMER:	
DRAWN BY:	Z. PROSTRAN	APPROVED BY:	H.M.K. & D.J.B.
			QL-114