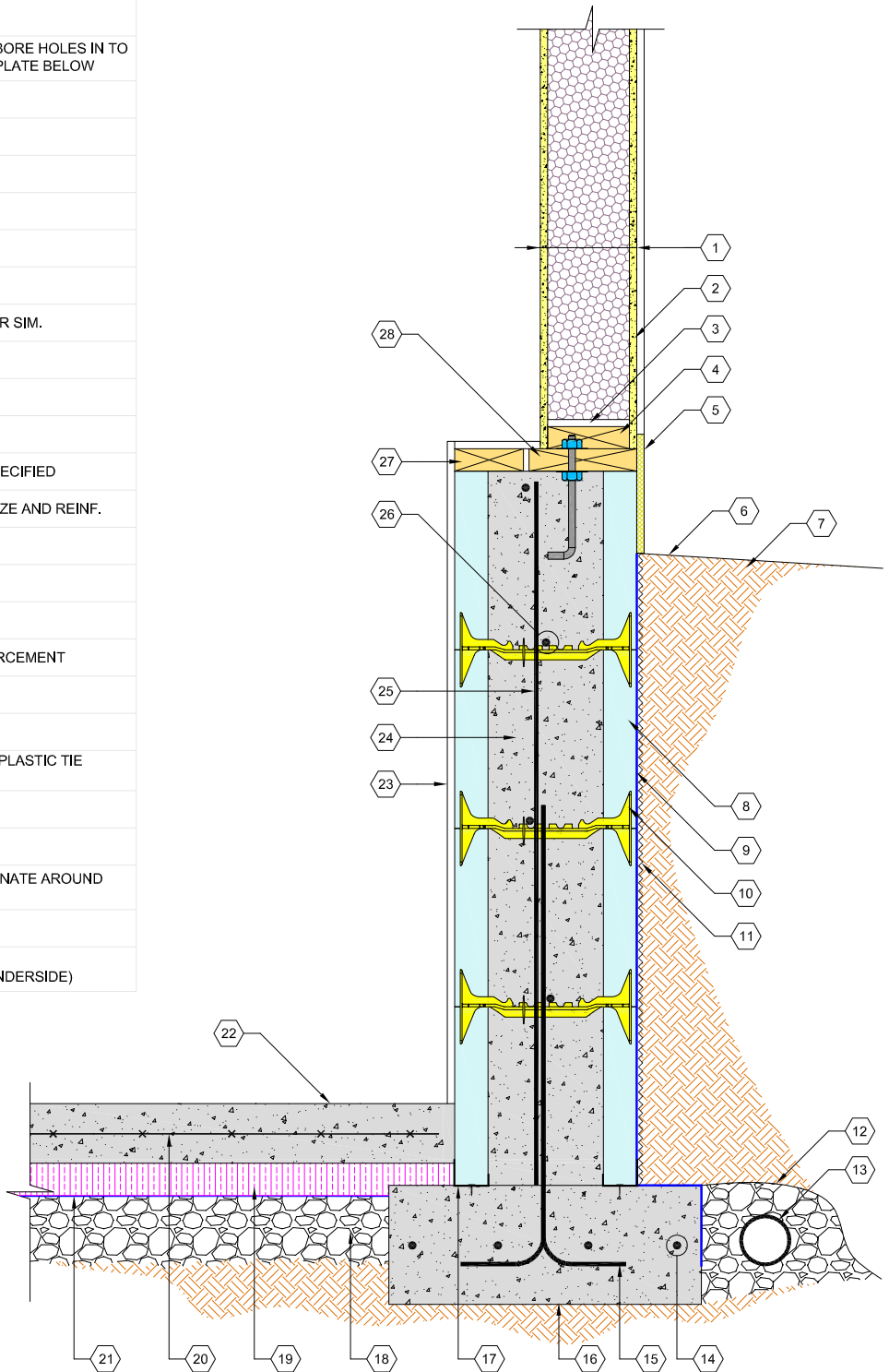


1. SIP (STRUCTURAL INSULATED PANEL)
2. EXTERIOR FINISH
3. SIP RECESS (TO ALLOW FOR BOTTOM PLATE)
4. 2x6 INDENTED 1/2" FROM THE OUTSIDE SILL PLATE (BORE HOLES IN TO ACCOMMODATE FOR BOLT NUT) SECURE INTO SILL PLATE BELOW
5. PARGING AS SPECIFIED (MIN. 8")
6. SLOPE GRADE AWAY FROM WALL
7. COMPACTED FILL
8. QUAD-LOCK REGULAR 2.25" PANEL
9. PEEL&STICK WATER PROOFING OR SIM.
10. QUAD-LOCK TIE (8" YELLOW SHOWN)
11. OPTIONAL BACKFILL PROTECTION - DIMPLEBOARD OR SIM.
12. GEO-TEXTILE FABRIC (OPTIONAL)
13. PERIMETER DRAIN
14. FOOTING STRIP REINFORCEMENT AS SPECIFIED
15. ALTERNATE DOWELS AND EXTEND INTO WALL AS SPECIFIED
16. FOOTING STRIP - SEE STRUCTURAL DETAILS FOR SIZE AND REINF.
17. QUAD-LOCK TRACK
18. ZERO COMPACTION SAND OR GRAVEL
19. UNDER SLAB INSULATION
20. WWM OR LONG. & TRANS. REBAR FOR SLAB REINFORCEMENT
21. VAPOR BARRIER AS SPECIFIED
22. SLAB ON GRADE AS SPECIFIED
23. INTERIOR FINISH (FASTEN GYPSUM WALLBOARD TO PLASTIC TIE FLANGES)
24. REINFORCED CONCRETE CORE
25. VERTICAL REINFORCEMENT AS SPECIFIED
26. HORIZONTAL REINFORCEMENT AS SPECIFIED ALTERNATE AROUND VERTICAL BARS
27. BLOCKING
28. P.T. SILL PLATE WITH ANCHOR BOLTS AS SPECIFIED (IF UNTREATED PROTECT WITH MEMBRANE FROM UNDERSIDE)



QUAD-LOCK
Building Systems Ltd.

Quad-Lock Building Systems Ltd.
7398 - 132nd Street
Surrey, BC V3W 4M7
Canada

888.711.5625 - Toll Free
604.590.3111
604.590.8412 - fax
www.quadlock.com

IT IS THE RESPONSIBILITY OF THE USER TO COMPLY WITH ALL APPLICABLE REGULATIONS AND BUILDING CODE REQUIREMENTS CONCERNING THE USE OF THESE PRODUCTS.
IT IS FURTHER THE RESPONSIBILITY OF THE USER TO RESEARCH AND UNDERSTAND SAFE METHODS OF USE AND HANDLING OF THESE PRODUCTS.

SIP (STRUCTURAL INSULATED PANEL) CONNECTION DETAIL

DATE:	2009-01-21	SCALE:	NOT TO SCALE
REVISION NO.:	R-02	PROJECT:	
REVISION DATE:	2009-07-10	CUSTOMER:	
DRAWN BY:	Z. PROSTRAN	APPROVED BY:	H.M.K. & D.J.B.
			DRAWING NO.:
			QL-112