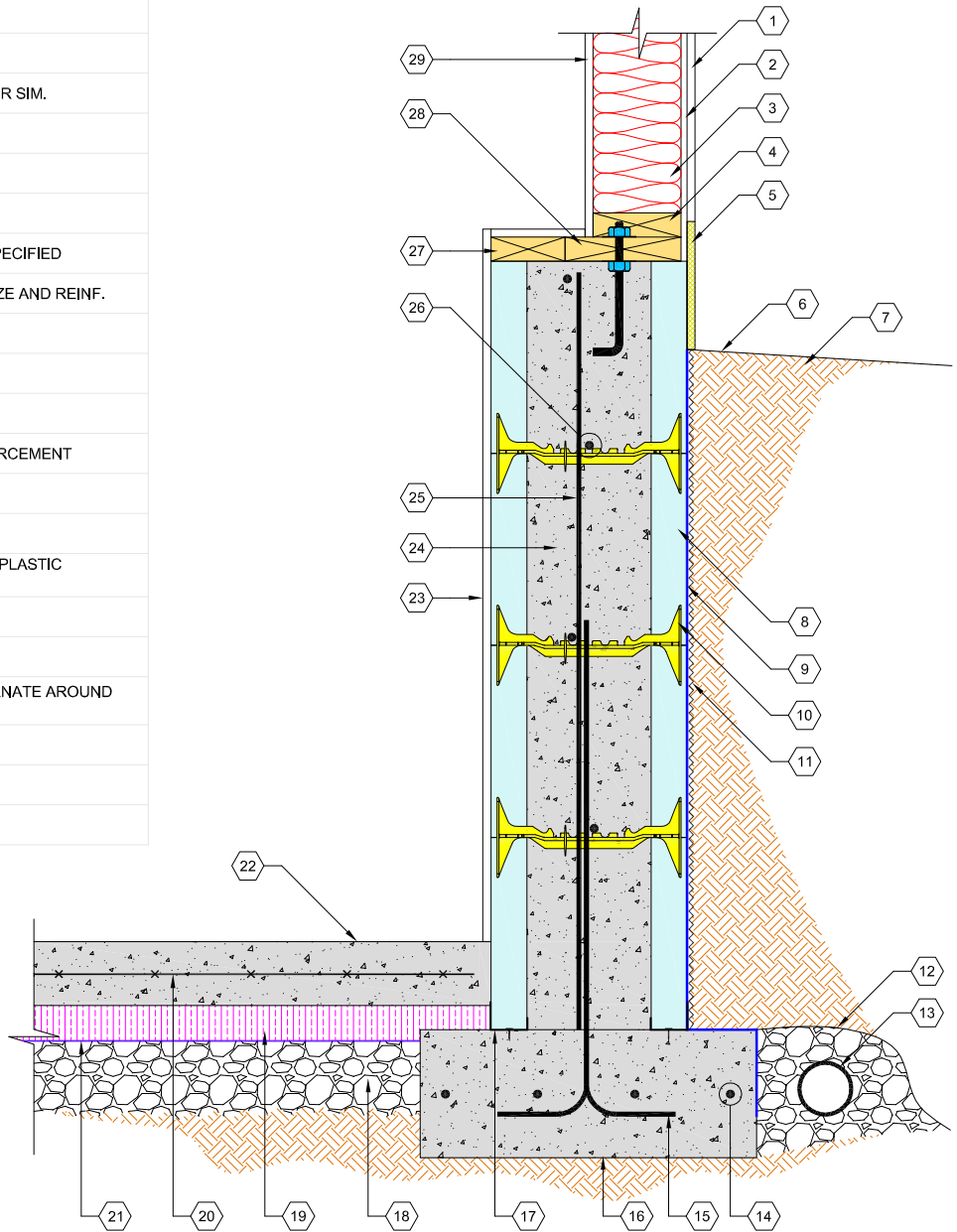


1. EXTERIOR FINISH
2. WALL SHEATHING
3. INSULATION AND STUDS
4. BOTTOM PLATE
5. PARGING AS SPECIFIED (MIN. 8")
6. SLOPE GRADE AWAY FROM WALL
7. COMPACTED FILL
8. QUAD-LOCK REGULAR 2.25" PANEL
9. PEEL&STICK WATER PROOFING OR SIM.
10. QUAD-LOCK TIE (8" YELLOW SHOWN)
11. OPTIONAL BACKFILL PROTECTION - DIMPLEBOARD OR SIM.
12. GEO-TEXTILE FABRIC (OPTIONAL)
13. PERIMETER DRAIN
14. FOOTING STRIP REINFORCEMENT AS SPECIFIED
15. ALTERNATE DOWELS AND EXTEND INTO WALL AS SPECIFIED
16. FOOTING STRIP - SEE STRUCTURAL DETAILS FOR SIZE AND REINF.
17. QUAD-LOCK TRACK
18. ZERO COMPACTION SAND OR GRAVEL
19. UNDER SLAB INSULATION - IF REQUIRED BY CODE
20. WWM OR LONG. & TRANS. REBAR FOR SLAB REINFORCEMENT
21. VAPOR BARRIER AS SPECIFIED
22. SLAB ON GRADE AS SPECIFIED
23. INTERIOR FINISH (FASTEN GYPSUM WALLBOARD TO PLASTIC FLANGES)
24. REINFORCED CONCRETE CORE
25. VERTICAL REINFORCEMENT AS SPECIFIED
26. HORIZONTAL REINFORCEMENT AS SPECIFIED ALTERNATE AROUND VERTICAL BARS
27. BLOCKING
28. P.T. SILL PLATE WITH ANCHOR BOLTS AS SPECIFIED
28. INTERIOR FINISH (GYPSUM WALLBOARD)



Quad-Lock Building Systems Ltd.
7398 - 132nd Street
Surrey, BC V3W 4M7
Canada

888.711.5625 - Toll Free
604.590.3111
604.590.8412 - fax
www.quadlock.com

IT IS THE RESPONSIBILITY OF THE USER TO COMPLY WITH ALL APPLICABLE REGULATIONS AND BUILDING CODE REQUIREMENTS CONCERNING THE USE OF THESE PRODUCTS.

IT IS FURTHER THE RESPONSIBILITY OF THE USER TO RESEARCH AND UNDERSTAND SAFE METHODS OF USE AND HANDLING OF THESE PRODUCTS.

BASEMENT PONY WALL DETAIL

DATE: 2009-01-21

SCALE: NOT TO SCALE

REVISION NO: R-02

PROJECT:

REVISION DATE: 2009-07-10

CUSTOMER:

DRAWN BY: Z. PROSTRAN

APPROVED BY:

H.M.K. & D.J.B.

DRAWING NO:

QL-111