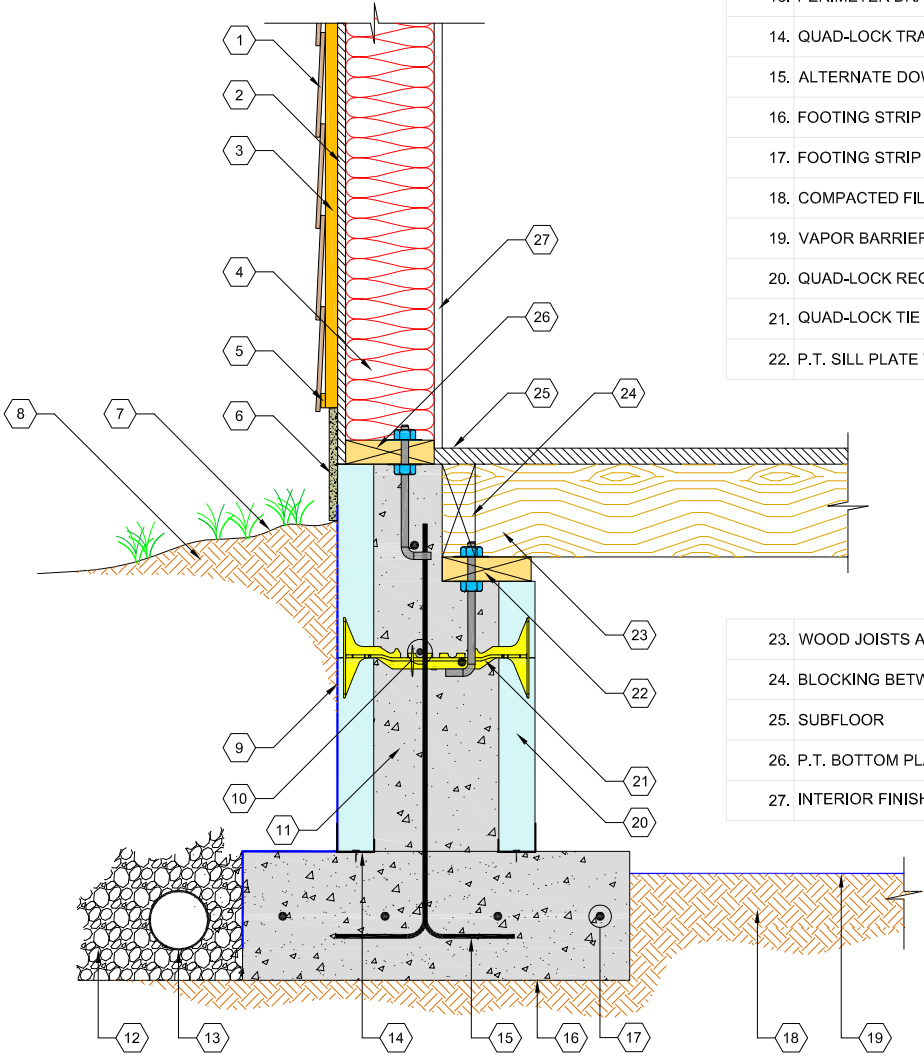


1. SIDING FINISH AS SPECIFIED
2. WALL SHEATHING
3. FURRING AS SPECIFIED
4. STUDS AND INSULATION
5. SPACER
6. PARGING AS SPECIFIED
7. SLOPE GRADE AWAY FROM WALL
8. COMPACTED FILL
9. PEEL&STICK WATER PROOFING OR SIM.
10. HORIZONTAL REINFORCEMENT AS SPECIFIED
11. REINFORCED CONCRETE CORE
12. FREE DRAINING FILL
13. PERIMETER DRAIN
14. QUAD-LOCK TRACK
15. ALTERNATE DOWELS AND EXTEND INTO WALL
16. FOOTING STRIP - SEE STRUCTURAL DETAILS FOR SIZE AND REINF.
17. FOOTING STRIP REINFORCEMENT AS SPECIFIED
18. COMPACTED FILL
19. VAPOR BARRIER AS SPECIFIED
20. QUAD-LOCK REGULAR 2.25" PANEL
21. QUAD-LOCK TIE (8" YELLOW SHOWN)
22. P.T. SILL PLATE W/ BOLTS AS SPECIFIED



23. WOOD JOISTS AS SPECIFIED
24. BLOCKING BETWEEN JOISTS AS SPECIFIED
25. SUBFLOOR
26. P.T. BOTTOM PLATE/SILL PLATE WITH ANCHOR BOLTS AS SPECIFIED
27. INTERIOR FINISH (GYPSUM WALLBOARD)



Quad-Lock Building Systems Ltd.  
 7398 - 132nd Street  
 Surrey, BC V3W 4M7  
 Canada  
 888.711.5625 - Toll Free  
 604.590.3111  
 604.590.8412 - fax  
 www.quadlock.com

## CRAWLSPACE FOUNDATION RECESSED FLOOR

DATE:	2009-01-21	SCALE:	NOT TO SCALE
REVISION NO.:	R-02	PROJECT:	
REVISION DATE:	2009-07-10	CUSTOMER:	
DRAWN BY:	Z. PROSTRAN	APPROVED BY:	H.M.K. & D.J.B.
			DRAWING NO.:
			QL-110

IT IS THE RESPONSIBILITY OF THE USER TO COMPLY WITH ALL APPLICABLE REGULATIONS AND BUILDING CODE REQUIREMENTS CONCERNING THE USE OF THESE PRODUCTS.  
 IT IS FURTHER THE RESPONSIBILITY OF THE USER TO RESEARCH AND UNDERSTAND SAFE METHODS OF USE AND HANDLING OF THESE PRODUCTS.