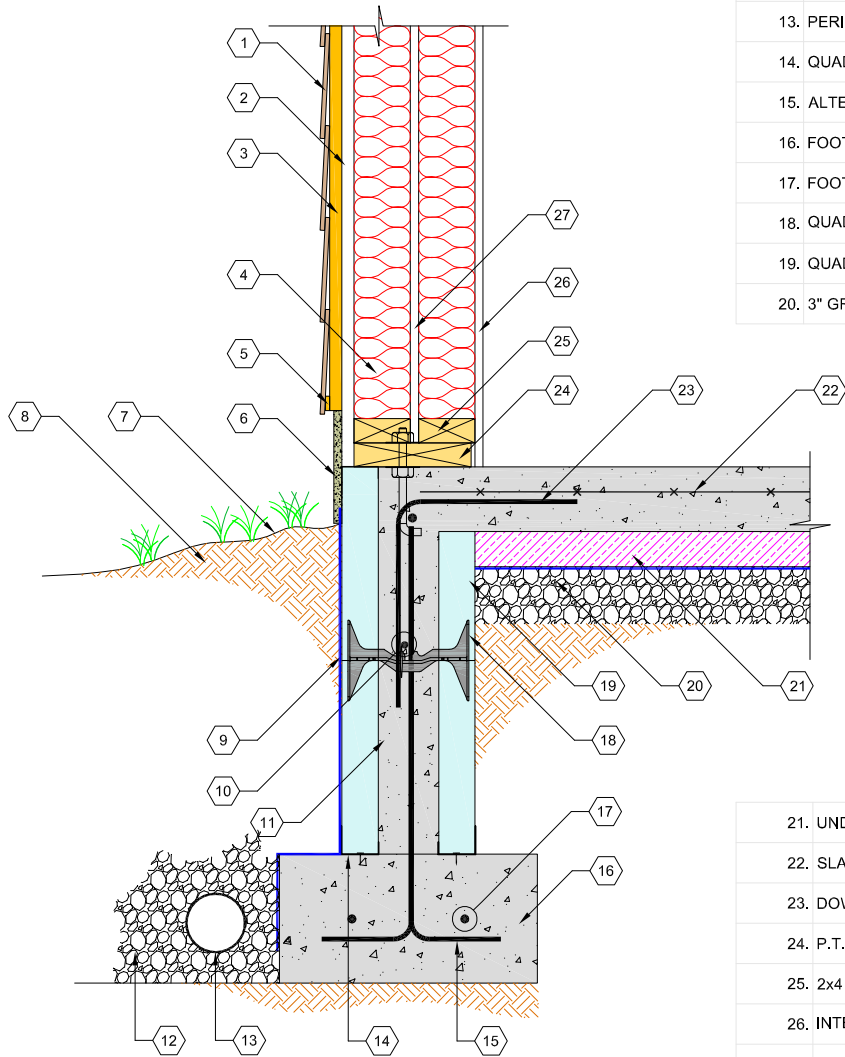


1. SIDING FINISH AS SPECIFIED
2. WALL SHEATHING
3. FURRING AS SPECIFIED
4. STUDS AND INSULATION
5. SPACER
6. PARGING AS SPECIFIED
7. SLOPE GRADE AWAY FROM WALL
8. COMPACTED FILL
9. PEEL&STICK WATER PROOFING OR SIM.
10. HORIZONTAL REINFORCEMENT AS SPECIFIED
11. REINFORCED CONCRETE CORE
12. FREE DRAINING FILL
13. PERIMETER DRAIN
14. QUAD-LOCK TRACK
15. ALTERNATE DOWELS AND EXTEND INTO WALL
16. FOOTING STRIP - SEE STRUCTURAL DETAILS FOR SIZE AND REINF.
17. FOOTING STRIP REINFORCEMENT AS SPECIFIED
18. QUAD-LOCK TIE (4" BLACK SHOWN)
19. QUAD-LOCK REGULAR 2.25" PANEL
20. 3" GRANULAR FILL W/ VAPOR BARRIER AS SPECIFIED



21. UNDERSLAB INSULATION
22. SLAB REINFORCEMENT AS SPECIFIED
23. DOWELS AS SPECIFIED
24. P. T. SILL PLATE W/ ANCHOR BOLTS AS SPECIFIED
25. 2x4 BOTTOM PLATE
26. INTERIOR FINISH (GYPSUM WALLBOARD)
27. PLYWOOD



Quad-Lock Building Systems Ltd.
 7398 - 132nd Street
 Surrey, BC V3W 4M7
 Canada
 888.711.5625 - Toll Free
 604.590.3111
 604.590.8412 - fax
 www.quadlock.com

FOUNDATION WALL DOUBLE 2X WALL ON TOP

DATE:	2009-01-21	SCALE:	NOT TO SCALE
REVISION NO.:	R-02	PROJECT:	
REVISION DATE:	2009-07-10	CUSTOMER:	
DRAWN BY:	Z. PROSTRAN	APPROVED BY:	H.M.K. & D.J.B.
			QL-107

IT IS THE RESPONSIBILITY OF THE USER TO COMPLY WITH ALL APPLICABLE REGULATIONS AND BUILDING CODE REQUIREMENTS CONCERNING THE USE OF THESE PRODUCTS.
 IT IS FURTHER THE RESPONSIBILITY OF THE USER TO RESEARCH AND UNDERSTAND SAFE METHODS OF USE AND HANDLING OF THESE PRODUCTS.