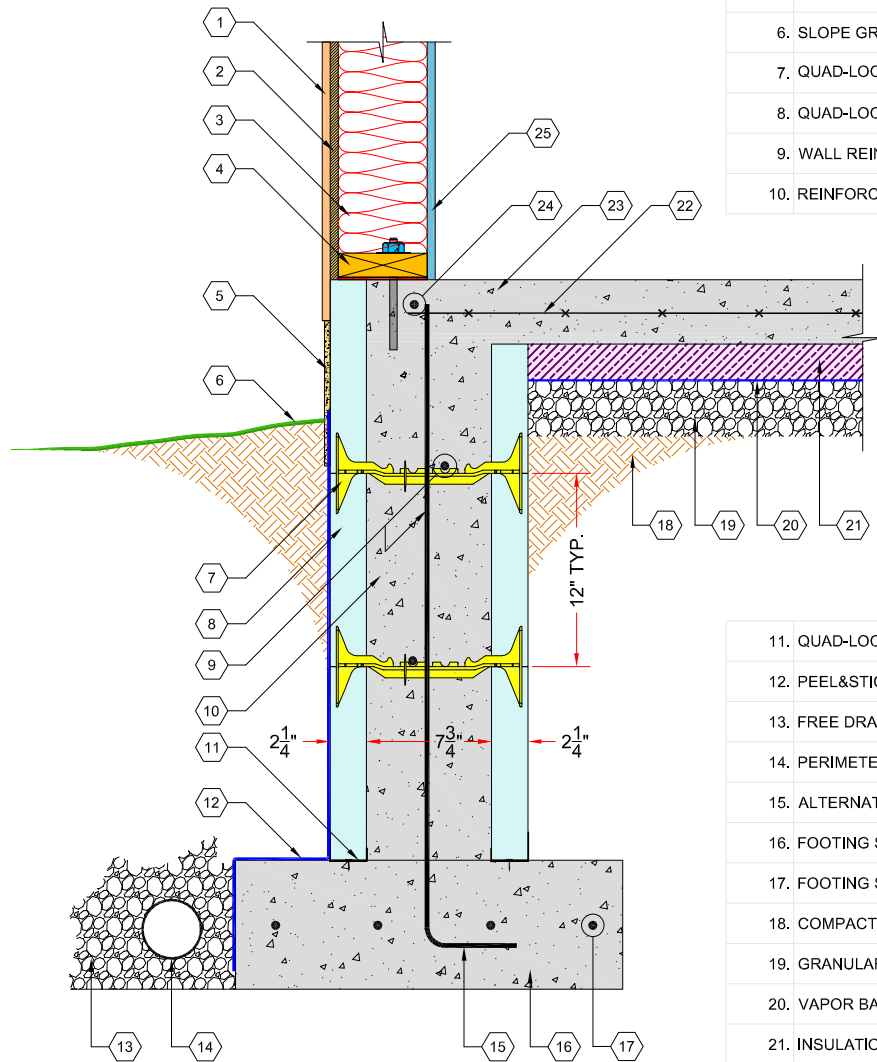


1. EXTERIOR WALL FINISH
2. SHEATHING
3. STUDS AND INSULATION
4. P.T. BOTTOM PLATE W/ ANCHOR BOLTS & SILL SEALER
5. PARGING AS SPECIFIED
6. SLOPE GRADE AWAY FROM WALL
7. QUAD-LOCK TIE (8" YELLOW SHOWN)
8. QUAD-LOCK REGULAR 2.25" PANEL
9. WALL REINFORCEMENT AS SPECIFIED
10. REINFORCED CONCRETE CORE



11. QUAD-LOCK TRACK
12. PEEL&STICK WATER PROOFING OR SIM.
13. FREE DRAINING FILL
14. PERIMETER DRAIN
15. ALTERNATE DOWELS AND EXTEND INTO WALL
16. FOOTING STRIP - SEE STRUCTURAL DETAILS FOR SIZE AND REINF.
17. FOOTING STRIP REINFORCEMENT AS SPECIFIED
18. COMPACTED FILL
19. GRANULAR FILL
20. VAPOR BARRIER AS SPECIFIED
21. INSULATION
22. WELDED WIRE MESH OR LONGITUDINAL AND TRANSVERSE REBAR
23. SLAB ON GRADE
24. TOP OF WALL REINFORCEMENT AS SPECIFIED
25. GYPSUM WALLBOARD

QUAD-LOCK
Building Systems Ltd.

Quad-Lock Building Systems Ltd.
7398 - 132nd Street
Surrey, BC V3W 4M7
Canada

888.711.5625 - Toll Free
604.590.3111
604.590.8412 - fax
www.quadlock.com

IT IS THE RESPONSIBILITY OF THE USER TO COMPLY WITH ALL APPLICABLE REGULATIONS AND BUILDING CODE REQUIREMENTS CONCERNING THE USE OF THESE PRODUCTS.

IT IS FURTHER THE RESPONSIBILITY OF THE USER TO RESEARCH AND UNDERSTAND SAFE METHODS OF USE AND HANDLING OF THESE PRODUCTS.

FOUNDATION WALL SLAB ON GRADE

DATE:	2009-01-21	SCALE:	NOT TO SCALE
REVISION NO.:	R-02	PROJECT:	
REVISION DATE:	2009-07-10	CUSTOMER:	
DRAWN BY:	Z. PROSTRAN	APPROVED BY:	H.M.K. & D.J.B.
			DRAWING NO.:
			QL-106