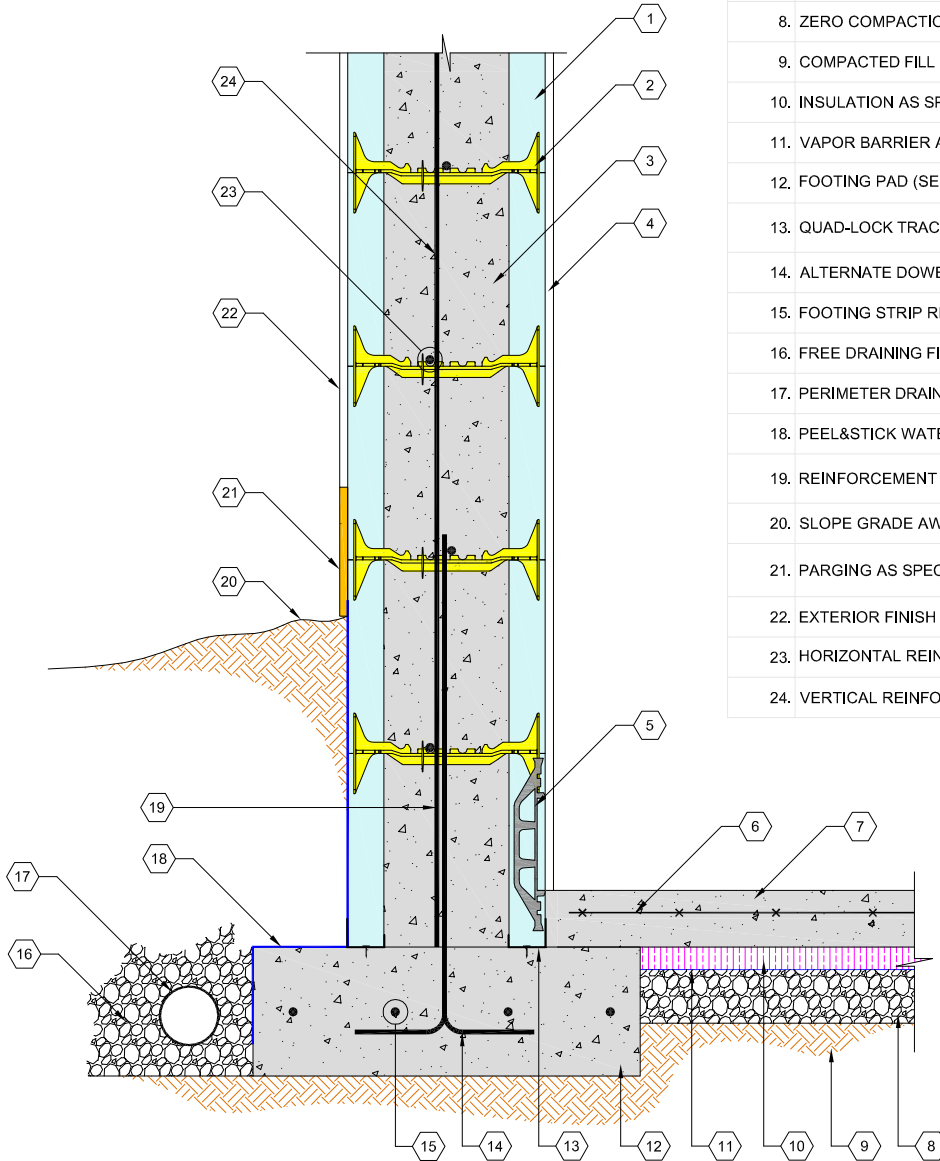


1. QUAD-LOCK REGULAR 2.25" PANEL
2. QUAD-LOCK TIE (8" YELLOW SHOWN)
3. REINFORCED CONCRETE CORE
4. INTERIOR FINISH (FASTEN GYPSUM WALLBOARD TO PLASTIC FLANGES)
5. FS PANEL FOR GYPSUM WALLBOARD ATTACHMENT
6. WELDED WIRE MESH OR LONGITUDINAL AND TRANSVERSE REBAR
7. SLAB ON GRADE
8. ZERO COMPACTION SAND OR GRAVEL
9. COMPACTED FILL
10. INSULATION AS SPECIFIED
11. VAPOR BARRIER AS SPECIFIED
12. FOOTING PAD (SEE STRUCTURAL DETAILS FOR SIZE AND REINF.)
13. QUAD-LOCK TRACK
14. ALTERNATE DOWEL LEGS AS SHOWN
15. FOOTING STRIP REINFORCEMENT AS SPECIFIED
16. FREE DRAINING FILL
17. PERIMETER DRAIN
18. PEEL&STICK WATER PROOFING OR SIM.
19. REINFORCEMENT OVERLAP AS SPECIFIED
20. SLOPE GRADE AWAY FROM WALL
21. PARGING AS SPECIFIED
22. EXTERIOR FINISH AS SPECIFIED
23. HORIZONTAL REINFORCEMENT (ALTERNATE BETWEEN COURSES)
24. VERTICAL REINFORCEMENT



QUAD-LOCK
Building Systems Ltd.

Quad-Lock Building Systems Ltd.
7398 - 132nd Street
Surrey, BC V3W 4M7
Canada

888.711.5625 - Toll Free
604.590.3111
604.590.8412 - fax
www.quadlock.com

IT IS THE RESPONSIBILITY OF THE USER TO COMPLY WITH ALL APPLICABLE REGULATIONS AND BUILDING CODE REQUIREMENTS CONCERNING THE USE OF THESE PRODUCTS.
IT IS FURTHER THE RESPONSIBILITY OF THE USER TO RESEARCH AND UNDERSTAND SAFE METHODS OF USE AND HANDLING OF THESE PRODUCTS.

BASEMENT FOUNDATION WALL

DATE:	2009-01-21	SCALE:	NOT TO SCALE
REVISION NO.:	R-02	PROJECT:	
REVISION DATE:	2009-07-10	CUSTOMER:	
DRAWN BY:	Z. PROSTRAN	APPROVED BY:	H.M.K. & D.J.B.
			DRAWING NO.:
			QL-105