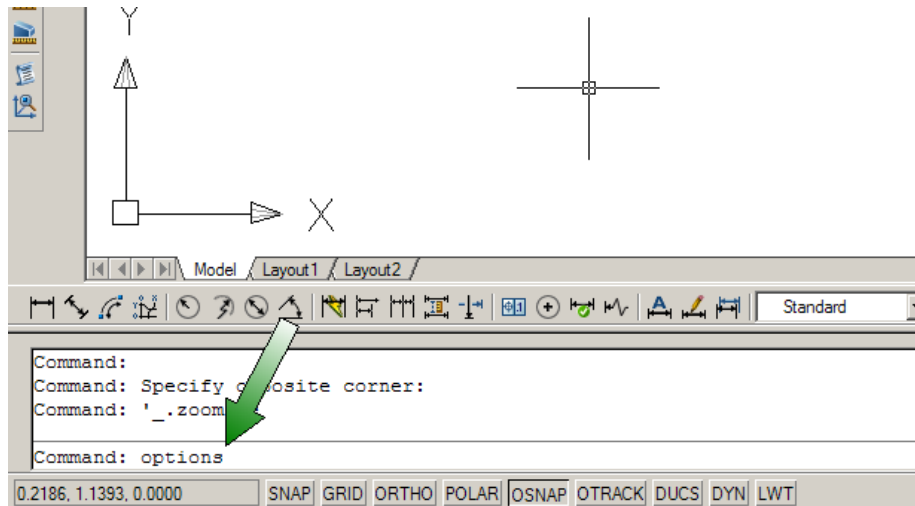


### Step 1:

Extract / unzip the compressed ZIP file to a directory on your computer. In this example we will be using "C:\Quad-Lock"

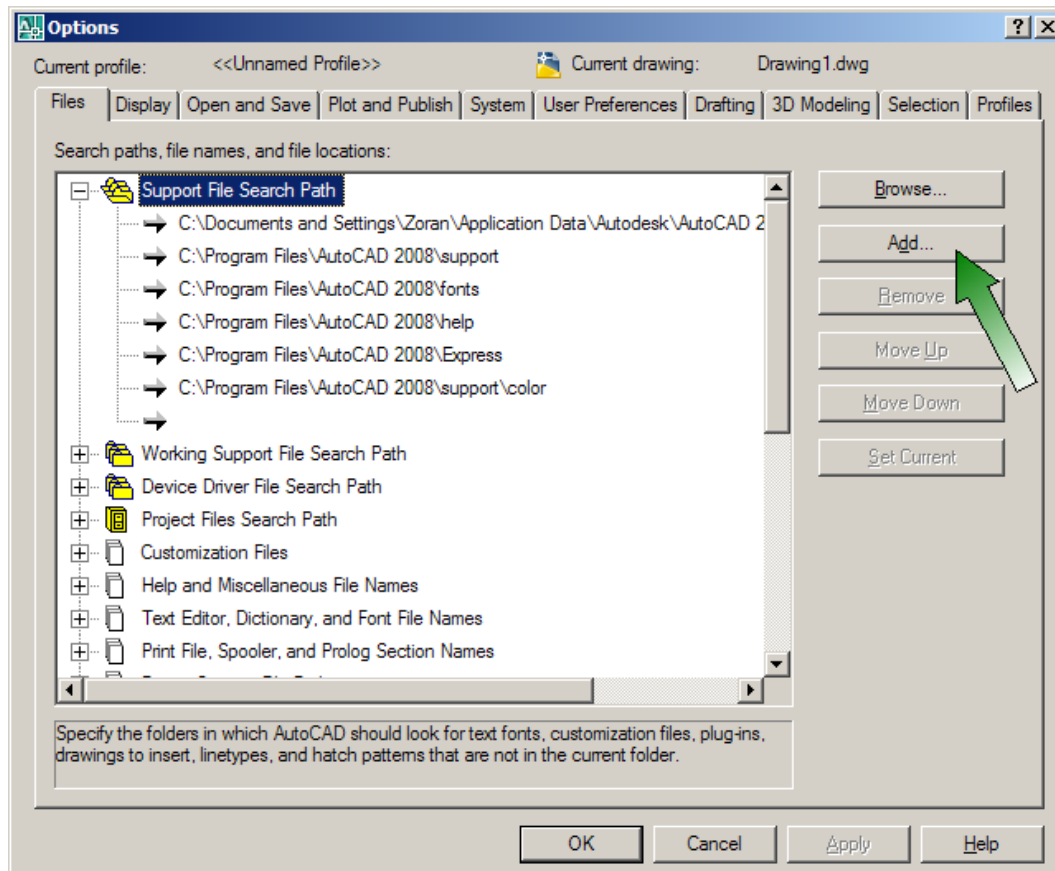
### Step 2:

Start up AutoCAD. Once AutoCAD has launched, type "options" in the AutoCAD command line.



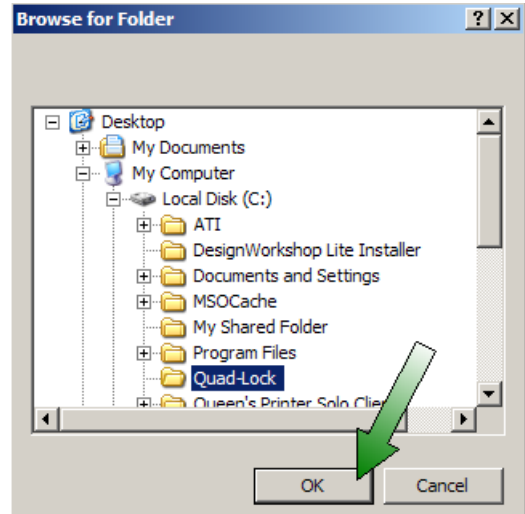
### Step 3:

From the "Options" dialog box, click on the "Support File Search Path" folder to highlight it. Then click the "Add" button.



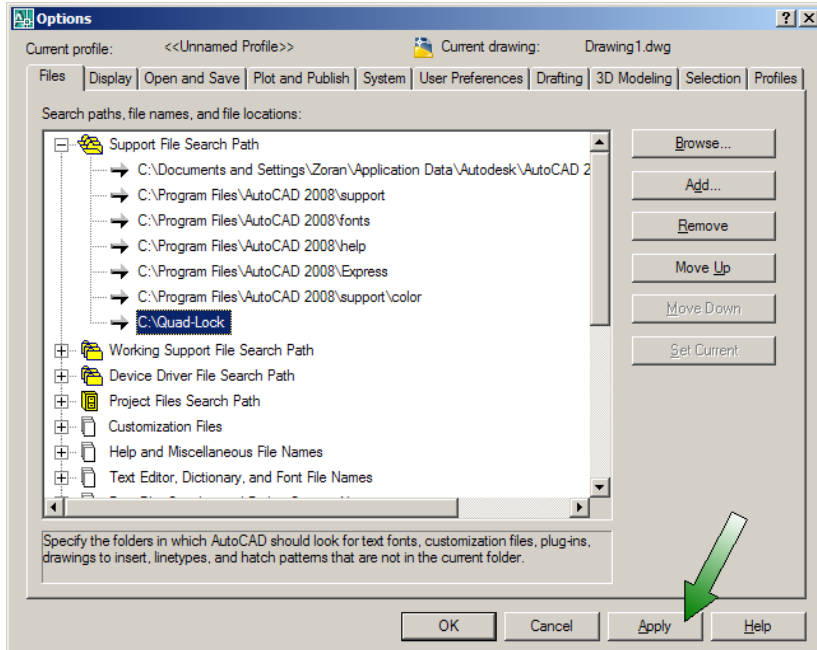
#### Step 4:

You will see the "**Browse for Folder**" dialog box as below. Navigate to the directory name where you extracted/unzipped the Quad-Lock CAD Library files during installation. In this example, we are using that installation's default directory of "**C:\Quad-Lock**" but your directory may be different if you chose a different location during **Step 1**.



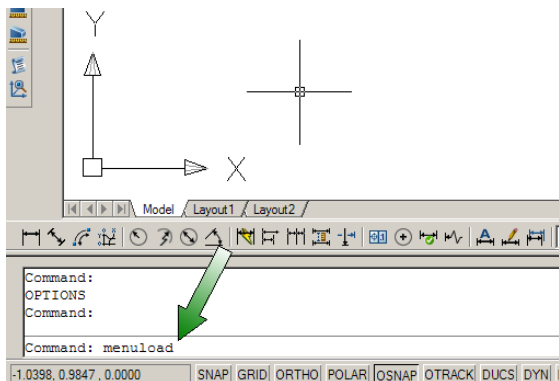
#### Step 5:

You will see the new Support File Search Path. Click the "**Apply**" and "**OK**" buttons.



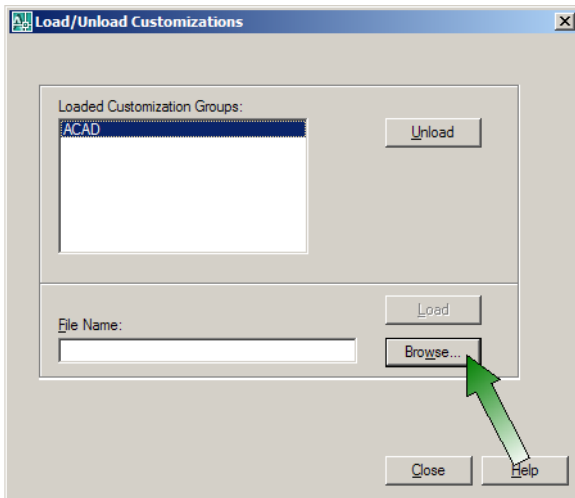
#### Step 6:

Type **menuload** in the AutoCAD command line.



### Step 7:

Click the "**Browse...**" button.

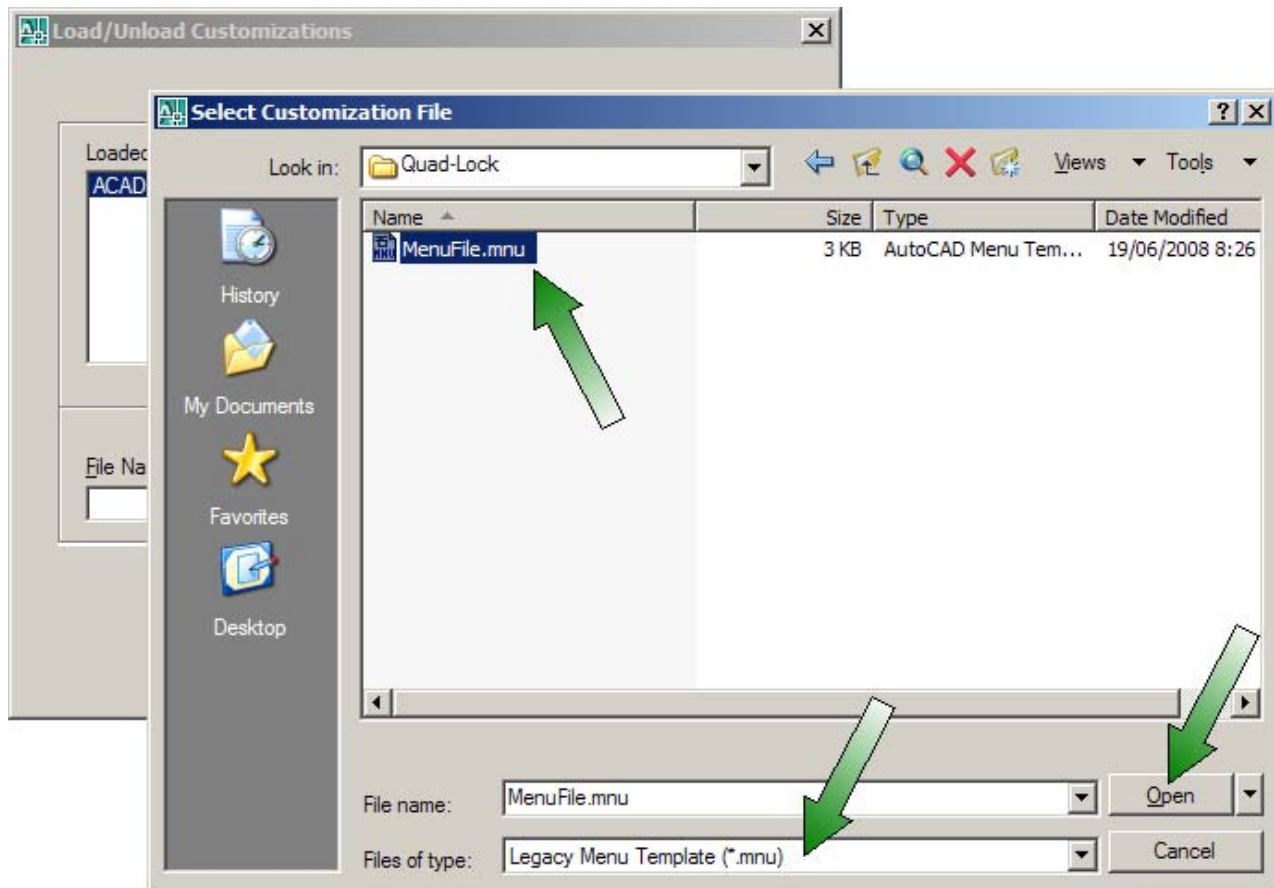


### Step 8:

Make sure that you are looking for files of type "**Legacy Menu Template (\*.mnu)**"

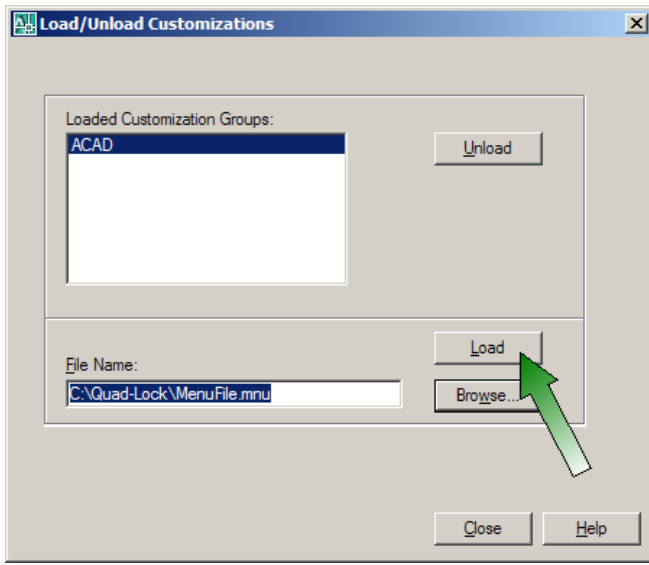
Click in the "**Look In**" drop down box and navigate to the directory where you installed the Quad-Lock CAD Library files (step 1).

Select the file "**MenuFile.mnu**", then button **Open**



### Step 9:

Click the "**Load**" button to load the menu and then the "**Close**" button.



### Finish!

Your AutoCAD installation is now configured for use with the Quad-Lock CAD Library. Choose the category, then the part you need and you will be prompted for placement.

Note: All drawings are inserted at a 1:1 Imperial scale. If you require metric, you will have to scale them individually by a factor of 25.4 upon insertion.

**Credit goes to Steve Lepper P.E. from Levig Design Group in San Diego, CA.**