

**INSULATING CONCRETE FORMING  
SYSTEMS FOR WALLS, FLOORS AND ROOFS**

**QUAD-LOCK®**

**SMART-R**

**Solution for Commercial Construction**

*“The product line that has been developed by Quad-Lock is the most superior product available to anyone wishing to develop multi-level buildings right down to housing.”*

*Their product is simply the best.*

*-Patrick Lenihan, Developer  
SCH Group*

**THINK CONCRETE - THINK THE SMART-R SOLUTION!**

# AN INTEGRATED, INSULATED BUILDING SOLUTION DESIGNED FOR COMMERCIAL CONSTRUCTION

## With Quad-Lock Insulating Concrete Forms (ICFs), you get the most versatile and comprehensive ICF on the market:

- **Unrivaled Versatility:** We offer forms with true R-Values of 22, 32 and 40, ten wall configurations, angles of any degree, curves, bracing, attachment accessories, waterproofing and stucco systems
- **Uncomplicated Design:** Our panel system allows you to design and work to any 2" increment – build around lintel or column reinforcements, rebar, anything
- **Unmatched Integration:** Our Quad-Deck product — an ICF for flooring and roofing applications provides a complete concrete structure
- **Unequaled Support:** Quad-Lock provides nationwide educational/hands-on training as well as specific jobsite training. Our strong Dealer network provides local assistance and inventory. Quad-Lock's head office compliments its field offices with strong engineering and technical resources
- **Unmistakable Commitment:** Our product development team works with our customers to bring timely, field-tested products to market. Our company has been ISO 9001:2000 Certified. We are one of the few ICF companies who manufacture their own product



### Added Value Through Building Durability

- Enhanced safety and security against catastrophic events
- Lower maintenance costs

### Financial Advantages

- Higher-valued building = greater leverage with your banker
- Longer building life = longer term amortization schedule
- Regional/Federal energy savings incentives
- Lower insurance costs throughout construction
- Heating & cooling equipment reduction
- No capital investment in forms
- Less labor = less time onsite

### Insulated, Poured-in-Place Walls, Floors and Roofs

- Solid, unlimited width concrete walls
- Self-bracing corners and angles
- No furring out walls
- Little or no on-site waste
- Light weight
- Unlimited design flexibility
- Speed: one crew installs your complete walls, floors and roof — structure, insulation & substrate all at once
- Simplified scheduling of sub-contractors

### Lower Operating Costs

- Energy efficient - save up to 70% on heating and cooling costs
- Lower insurance costs
- More attractive to lease

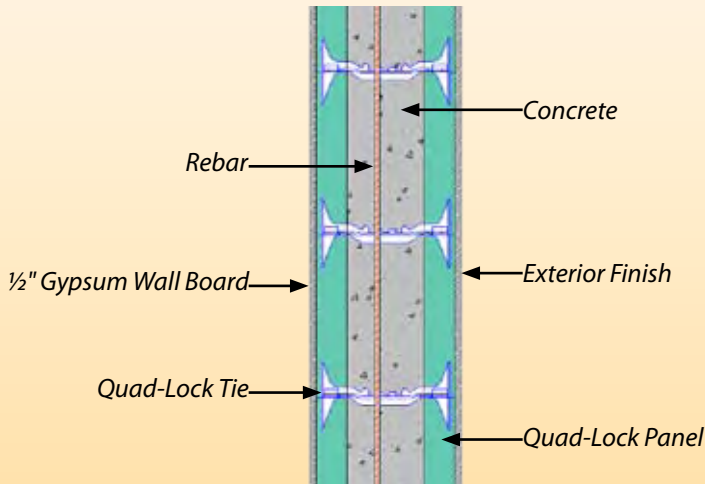


# THE QUAD-LOCK SMART-R ADVANTAGE

## Common Walls - Fire Walls

Quad-Lock understands the challenges and needs of construction. That is why Quad-Lock's Insulating Concrete Forms (ICFs) are an ideal building system for firewalls or soundwalls in multi-unit projects.

### Typical 4-hour firewall construction with Quad-Lock



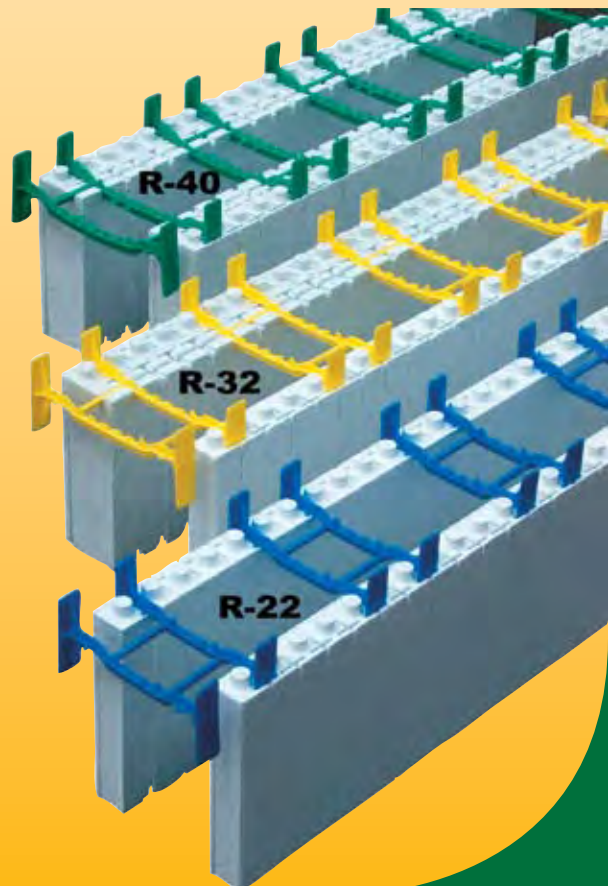
### Quad-Lock Buildings Are:

- Four hour fire rated walls
- Sound resistant (STC rating 50+)
- Code approved
- Cleaner, quieter, more comfortable
- Not susceptible to rot, mold or mildew
- Energy efficient up to true R-40
- Environmentally responsible



*“I use Quad-Lock Insulating Concrete Forms for building my firewalls because the ease of assembly creates outstanding value. Quad-Lock’s sound resistant qualities are unmatched and far superior to wood firewall construction.”*

**–Mark Calvin**  
Builder/Developer  
Grand Junction, CO



BY PROFESSIONALS FOR PROFESSIONALS

# THE SMART-R BUILDING SYSTEM INCLUDES:



## • Variable Walls

- Wall cavities can be any desired thickness
- R-Values from R-22 to R-40 (U-Values up to 0.15)

## • Integrated Floor & Roofing Systems

- Fast-to-form using up to 30% less concrete
- One-third the labor of traditional concrete floor systems

## • Bracing Systems

- Up to 30 feet high

## • Common Walls are Firewalls

- Up to four hour fire rating

## • Training

- National qualification program
- On-site training



### COST TYPE

COST TYPE	SMART-R (Quad-Lock)	WOOD FRAME	CONCRETE or CMU
Construction Time (Shell)	6 Months	6 Months	7 Months
Additional Labor Costs	\$0	\$0	\$50,000
Additional Financing Costs	\$0	\$0	\$10,000
Insurance - Course of Construction	0.02/\$100 Cost/mo	0.06/\$100 Cost/mo	0.02/\$100 Cost/mo
Additional Course of Construction Insurance Costs	\$0	\$24,000	\$0
Additional Heating/Cooling Equipment Costs	\$0	\$100,000	\$50,000
Additional Security During Construction Costs	\$0	\$50,000	\$0
Lost Tax Incentives for Energy Efficiency	\$0	\$100,000	\$50,000
<b>Total Additional Costs During Construction</b>	<b>\$0</b>	<b>\$274,000</b>	<b>\$160,000</b>
Additional Insurance Costs per year	\$0	\$10,000	\$0
Additional Maintenance Costs per year	\$0	\$25,000	\$10,000
Additional Operations Costs per year	\$0	\$10,000	\$5,000
<b>Total Additional Costs Every Year of Building Life</b>	<b>\$0</b>	<b>\$45,000</b>	<b>\$15,000</b>

Example: 4 story, 50,000 sqft building (approximation)

# QUAD-LOCK®



ISO 9001:2000  
Certified Company

GREENSPEC®

