

Planning to Build a New Wood Home? You CAN Afford to do Better

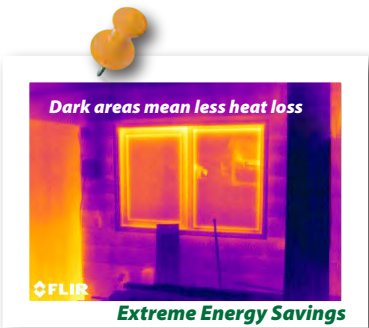


Building With Quad-Lock Insulating Concrete Forms is Simply a Better Choice



BETTER Investment

- **Ultra Energy Efficient** – The Quad-Lock system can reduce heating & cooling costs by up to 80% compared with wood construction.
- **Durable** – concrete structures can last for 100s of years versus decades, with lower maintenance costs.
- **Smart** – Insurance premiums and HVAC costs can be lower for Quad-Lock homes and re-sale values are typically higher.



BETTER Health & Comfort

- **Improved Indoor Air Quality** – Your Quad-Lock walls will not promote rot, mold or mildew. Reduced air infiltration allows better conditioning & allergen filtering of indoor air.
- **Comfortable** – consistent inside temperatures without cold spots or drafts.
- **Peace & Quiet** – with a 50% reduction in noise transfer compared to wood.



BETTER Safety

- **Super Strong** – Reinforced concrete homes can be designed to withstand many hurricane/tornado force winds and associated flying debris, keeping your family secure.
- **Fire Resistant** – Quad-Lock walls have a fire-rating of up to 4 hours compared to only 1 hour for wood walls.



** Call Quad-Lock today for a free quote*

QUAD-LOCK®

The Bottom Line: Total Cost of Ownership is Lower in a Quad-Lock ICF Home

Compare the Facts...

Pay Less – Get More

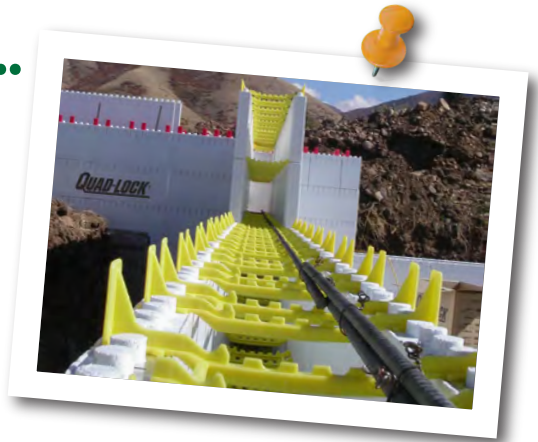
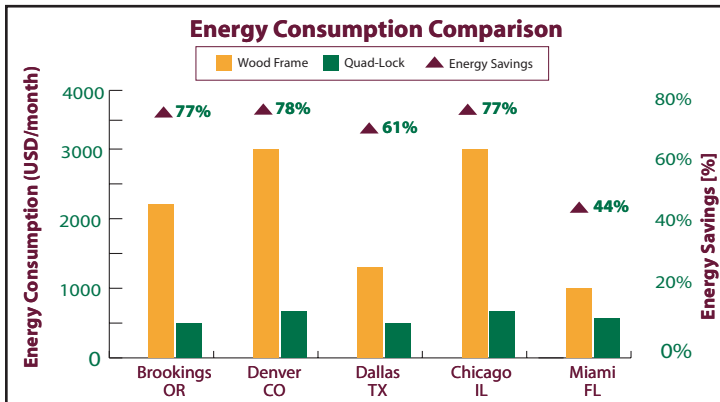


Monthly Cost of Home Ownership Comparison

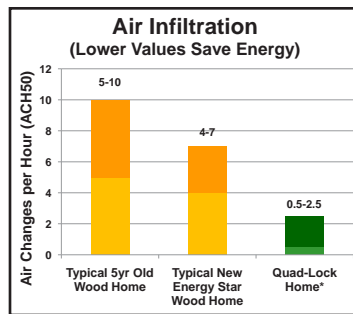
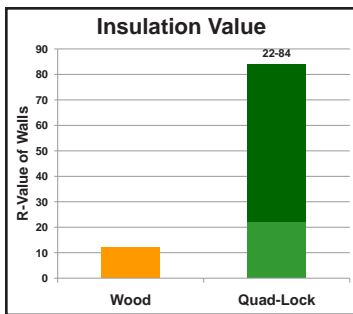
| | Wood Home | ICF Home | Comments |
|----------------------------|----------------|----------------|----------------------------|
| Build Cost | \$200,000 | \$208,000 | 4% more |
| Principal + Interest | \$1,119 | \$1,163 | 7.5% interest, 20% down |
| Taxes | \$300 | \$312 | .15% tax rate |
| Insurance | \$25 | \$23 | 10% savings |
| Energy | \$145 | \$87 | 40-80% savings* |
| Maintenance & Repair | \$38 | \$19 | 50% savings* |
| Total Monthly Costs | \$1,627 | \$1,604 | \$23 less per month |

Source: National Association of Homebuilders Study for HUD/PATH, 2001 *Source: Quad-Lock Empirical data

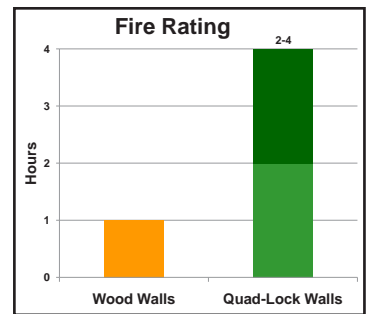
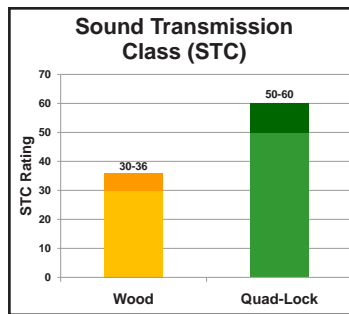
How We Stack Up...



Energy Consumption Comparison data calculated by EnergyWise Structures, independent consultant, Mansfield TX. Based on a building in Brookings, OR, 20,025 sqft, using heat pumps, 7.5" roof insulation and other energy saving building materials



*With well sealed roof & openings



Quad-Lock can provide you with free quotes and contractor referrals.

Call us today at 888-711-5625 or visit www.quadlock.com



Version 10.3.4 Release Date 2010-10



Web: www.quadlock.com Email: info@quadlock.com
 Head Office: 7398-132nd Street, Surrey, BC Canada V3W 4M7
 Tel: 604.590.3111 or 888.711.5625

ISO: 9001
 ISO: 14001
 Certified Company